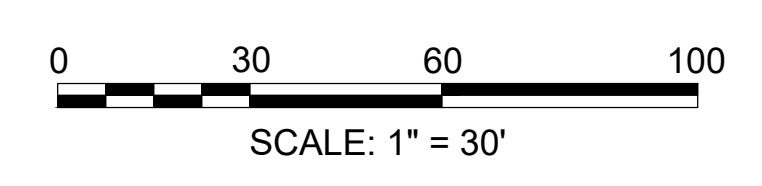
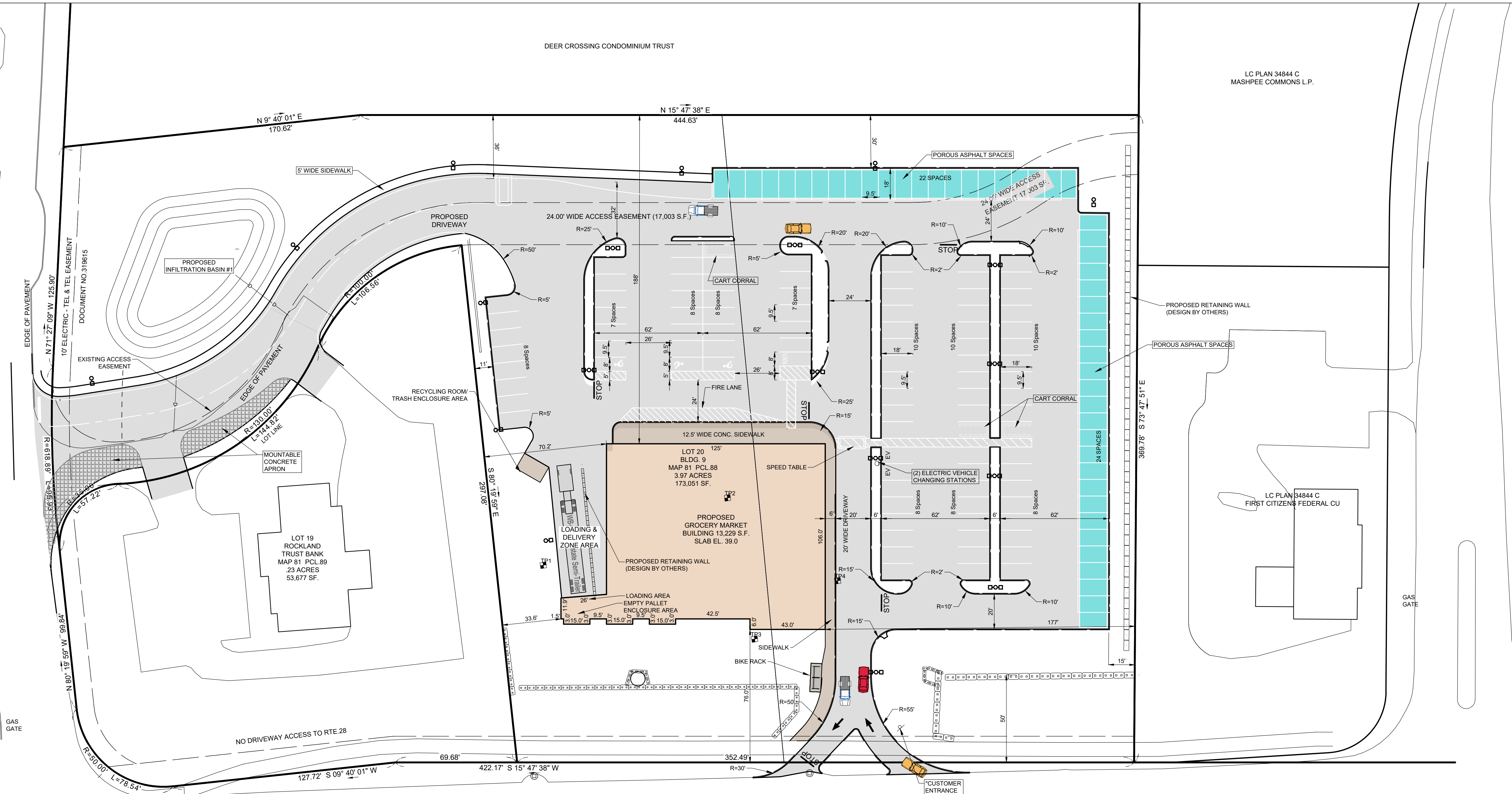


WB-67
AASHTO



LC PLAN 34844 C
MASHPEE COMMONS L.P.

LC PLAN 34844 C
FIRST CITIZENS FEDERAL CU

NOTICE
THIS PLAN MAY NOT BE ADDED TO, DELETED FROM, OR ALTERED IN ANY WAY BY ANYONE OTHER THAN CAPE & ISLANDS ENGINEERING, INC.
UNLESS AND UNTIL SUCH TIME AS AN ORIGINAL (RED) STAMP APPEARS ON THIS PLAN NO PERSON OR PERSONS, MUNICIPAL OR PUBLIC OFFICIAL, MAY RELY UPON THE INFORMATION CONTAINED HEREIN, AND THIS PLAN REMAINS THE PROPERTY OF CAPE & ISLANDS ENGINEERING, INC.
COPYRIGHT (C) BY CAPE & ISLANDS ENGINEERING, INC. ALL RIGHTS RESERVED

DATE	DESCRIPTION	BY	CHK
PREPARED FOR: SHELLBACK DEVELOPMENT 367 MAIN STREET FALMOUTH, MA 02540			
PROJECT: 647 FALMOUTH ROAD MASHPEE, MASSACHUSETTS 02649			
SHEET NO.: C-101		DATE: JUNE 24, 2022	
DRAWN BY: RLR		CHECKED BY: MC	
PREPARED BY: CAPE & ISLANDS ENGINEERING SUMMERFIELD PARK 800 FALMOUTH ROAD SUITE 301C MASHPEE, MA 02649 508.477.7272 PHONE info@CapeEng.com 508.477.9072 FAX www.CapeEng.com			
DRAWING TITLE: SITE LAYOUT PLAN		SHEET: C-101	
THIS SHEET IS PART OF A SET. SEE COVER SHEET FOR LIST OF ALL SHEETS. ASSESSORS INFORMATION: MAP 81 PARCEL 132			