

Design and construction documents as instruments of service are given in confidence and remain the property of Herschman Architects. The use of this design and these construction documents for purposes other than the specific project named herein is strictly prohibited without expressed written consent of Herschman Architects, Incorporated.

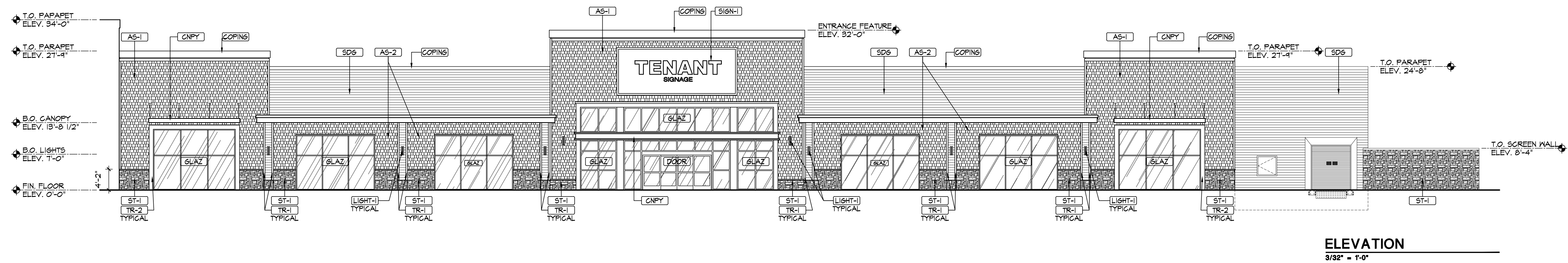
Date Issue

06/20/18 CCC REVIEW

-
-
-
-
-
-
-

Drawn By: PMF

Project No.: 16304



EXTERIOR MATERIALS	
AS-1	CERTAINTEED, CEDAR IMPRESSIONS, SINGLE T" STRAIGHTEDGE PERFECTION SHINGLES. COLOR: SAVANNAH WICKER
AS-2	CERTAINTEED, CEDAR IMPRESSIONS, SINGLE T" STRAIGHTEDGE PERFECTION SHINGLES. COLOR: GRANITE GRAY
CNFY	PREFINISHED METAL CANOPY
COPING	PREFINISHED METAL COPING, COLOR: NATURAL WHITE
DOOR	ALUMINUM AUTOMATIC SLIDING DOOR, COLOR TO MATCH TENANT EXTERIOR
GLAZ	ALUMINUM STOREFRONT/CURTAIN-WALL SYSTEM, COLOR OF MULLIONS (EXT.) TO MATCH HARTFORD GREEN
LIGHT-1	EXTERIOR DECORATIVE LIGHT FIXTURE, REFER TO ELECTRICAL DRAWINGS
SD6	CERTAINTEED, MONOGRAM, 5" CLAPBOARD, COLOR: SANDSTONE BEIGE
SIGN-1	INDIVIDUAL LETTER SIGNAGE w/ INTERNALLY ILLUMINATED LETTERS, SUPPLIED AND INSTALLED BY TENANT VENDOR
ST-1	CORONADO STONE, MOUNTAIN STONE-CAPE COD GREY
TR-1	CERTAINTEED CERTATRIM, COLOR: NATURAL WHITE
TR-2	CERTAINTEED CERTATRIM J-POCKET TRIMBOARDS, COLOR: NATURAL WHITE

CAPE COD MALL
HYANNIS, MA 02601



HERSCHMAN
ARCHITECTS
INCORPORATED

25001 EMERY ROAD, SUITE 400

CLEVELAND, OH 44128

TEL (216) 223-3200

FAX (216) 223-3210

www.herschmanarchitects.com

A6.0