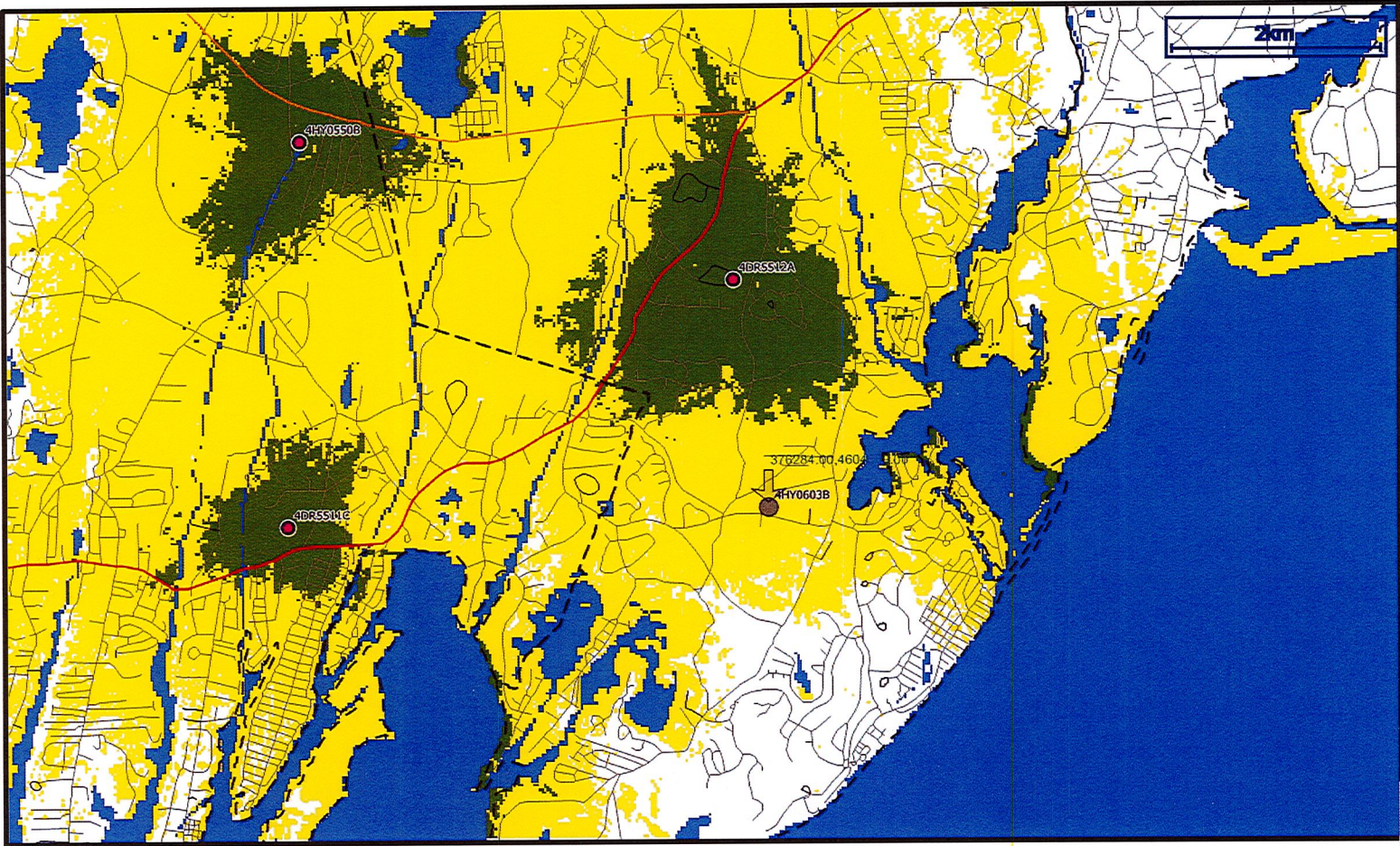


Existing LTE 2100 MHz Coverage in Mashpee, MA



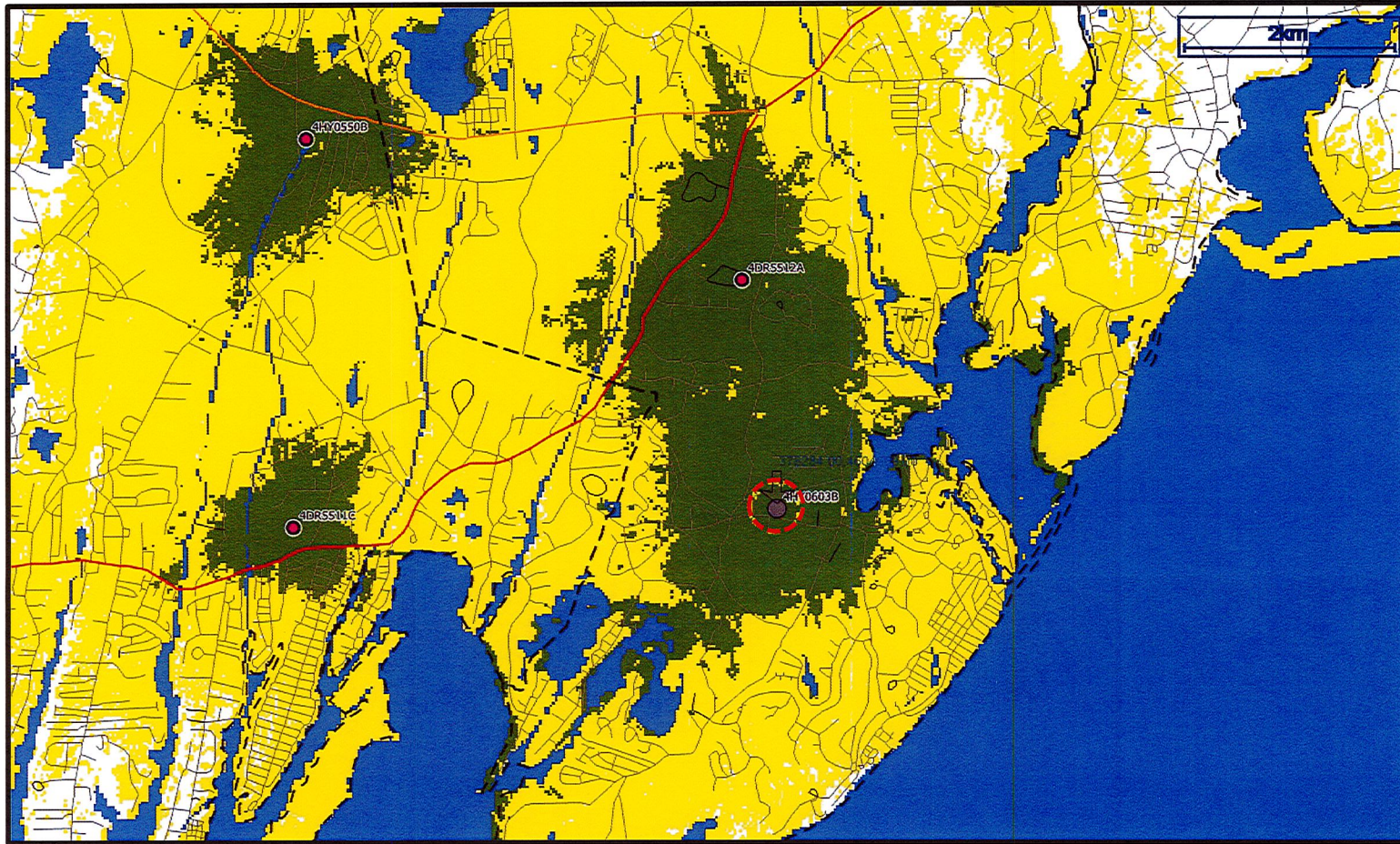
- Existing T-Mobile On-Air Site
- Propose T-Mobile Site

- Other_Road Line Line 1
- Primary_Road Line Line 1
- Secondary_Road Line Line 1
- Neighborhood_Road Line Line 1

Ranges			
Minimum	Maximum	Label	Colour
-114	-97	In-Vehicle	Yellow
-97	0	In-Building	Green

5/1/18

Propose LTE 2100MHz Coverage with Primary Candidate at 101 Red Brook Road, Mashpee, MA at Height of 135 Feet

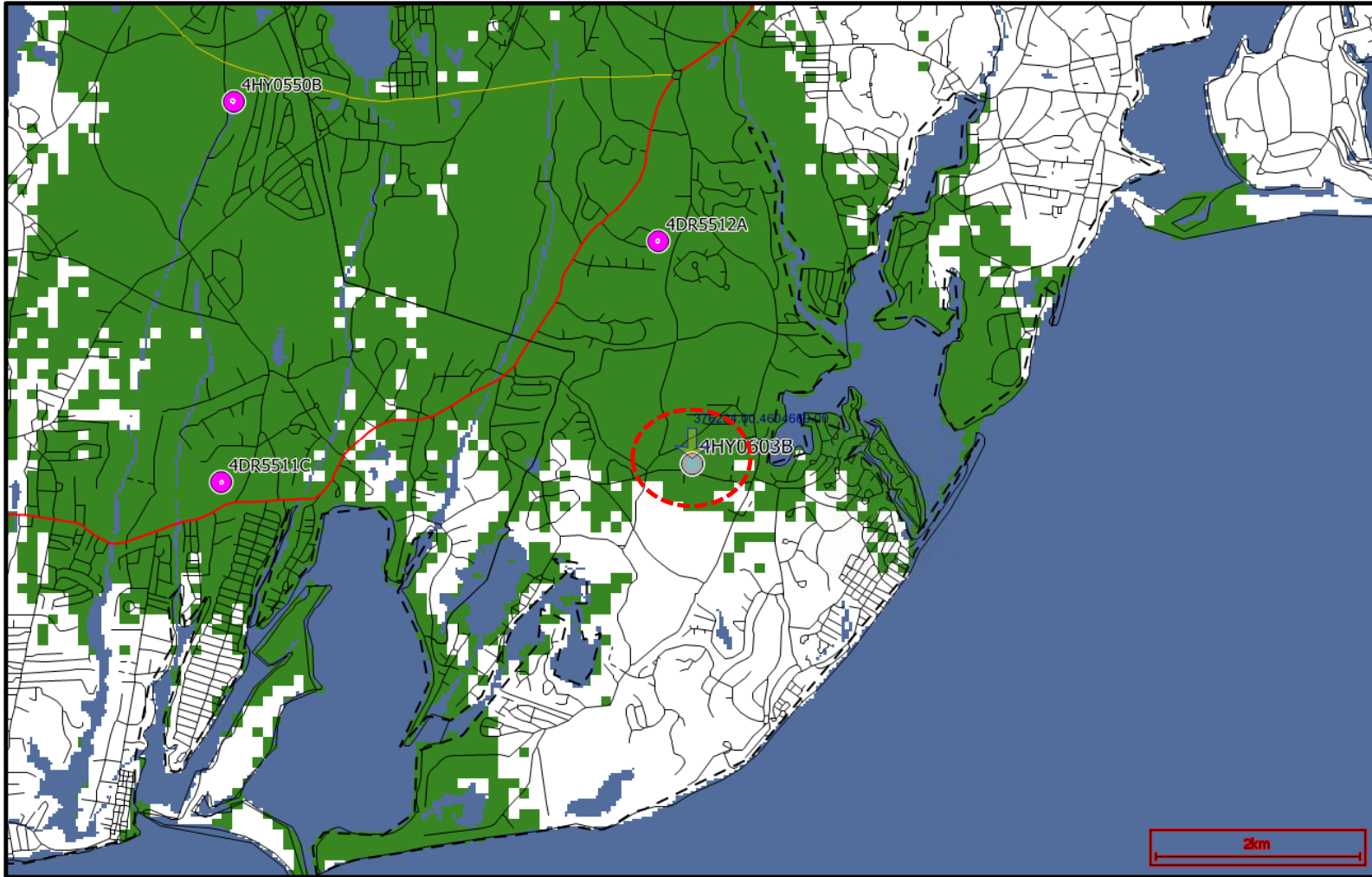




- Existing T-Mobile On-Air Site
- Propose T-Mobile Site





- Other_Road
 Line
Line 1
- Primary_Road
 Line
Line 1
- Secondary_Road
 Line
Line 1
- Neighborhood_Road
 Line
Line 1


Ranges			
Minimum	Maximum	Label	Colour
-114	-97	In-Vehicle	Yellow
-97	0	In-Building	Green

Existing LTE L700 MHz Coverage in Mashpee, MA



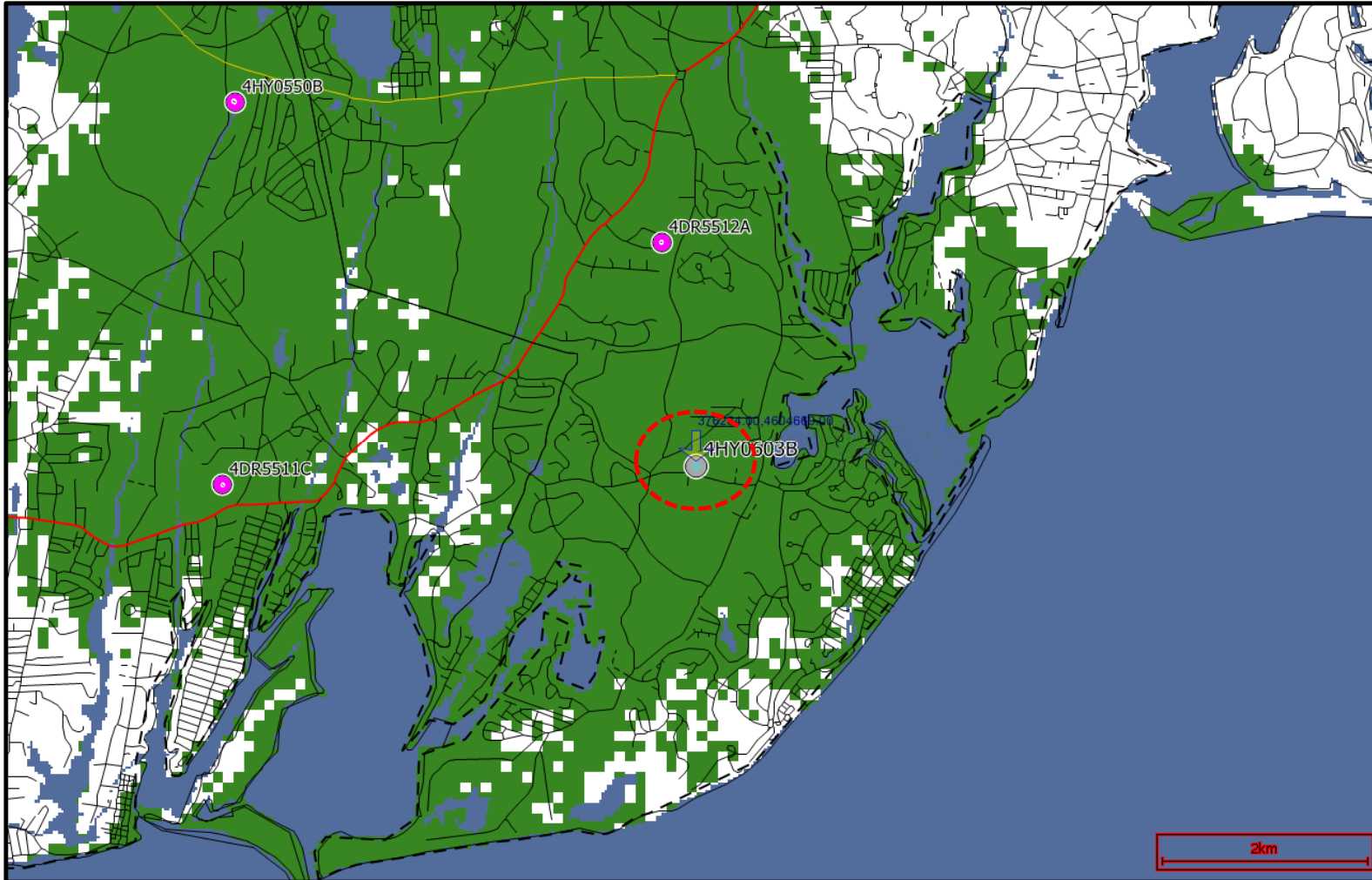
-  Existing T-Mobile On-Air Site
-  Propose T-Mobile Site



- Other_Road Line  Line 1
- Primary_Road Line  Line 1
- Secondary_Road Line  Line 1
- Neighborhood_Road Line  Line 1

Minimum	Maximum	Label	Colour
-97	0	In-Building	

9/5/18

Propose LTE 700 MHz Coverage with Primary Candidate at 101 Red Brook Road, Mashpee, MA at Height of 135 Feet



-  Existing T-Mobile On-Air Site
-  Propose T-Mobile Site

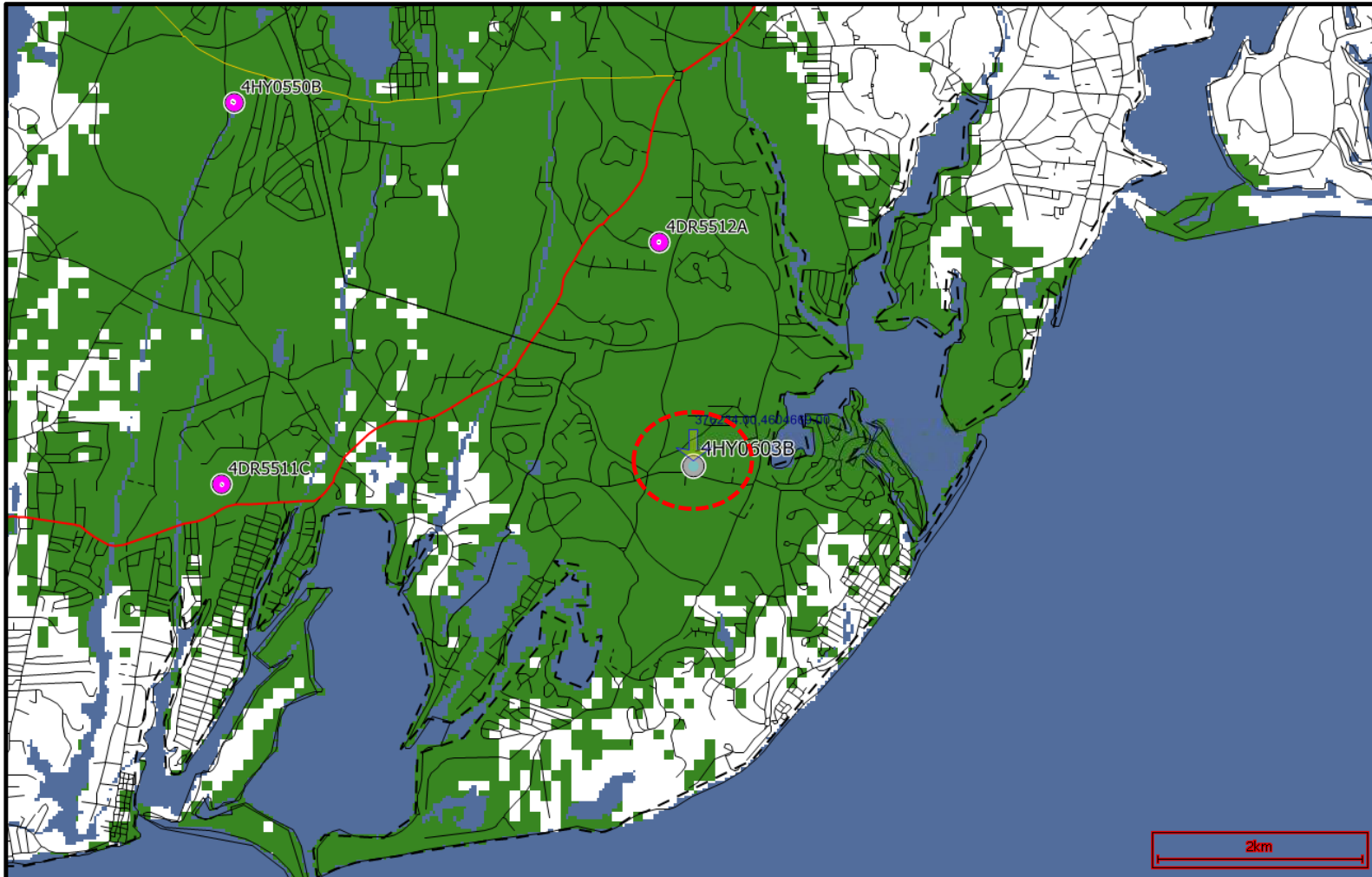
- Other_Road
 Line
Line 1
- Primary_Road
 Line
Line 1
- Secondary_Road
 Line
Line 1
- Neighborhood_Road
 Line
Line 1

Minimum	Maximum	Label	Colour
-97	0	In-Building	

2km

9/5/18

Propose LTE 700 MHz Coverage with Primary Candidate at 101 Red Brook Road, Mashpee, MA at Height of 110 Feet



- Existing T-Mobile On-Air Site
- Propose T-Mobile Site

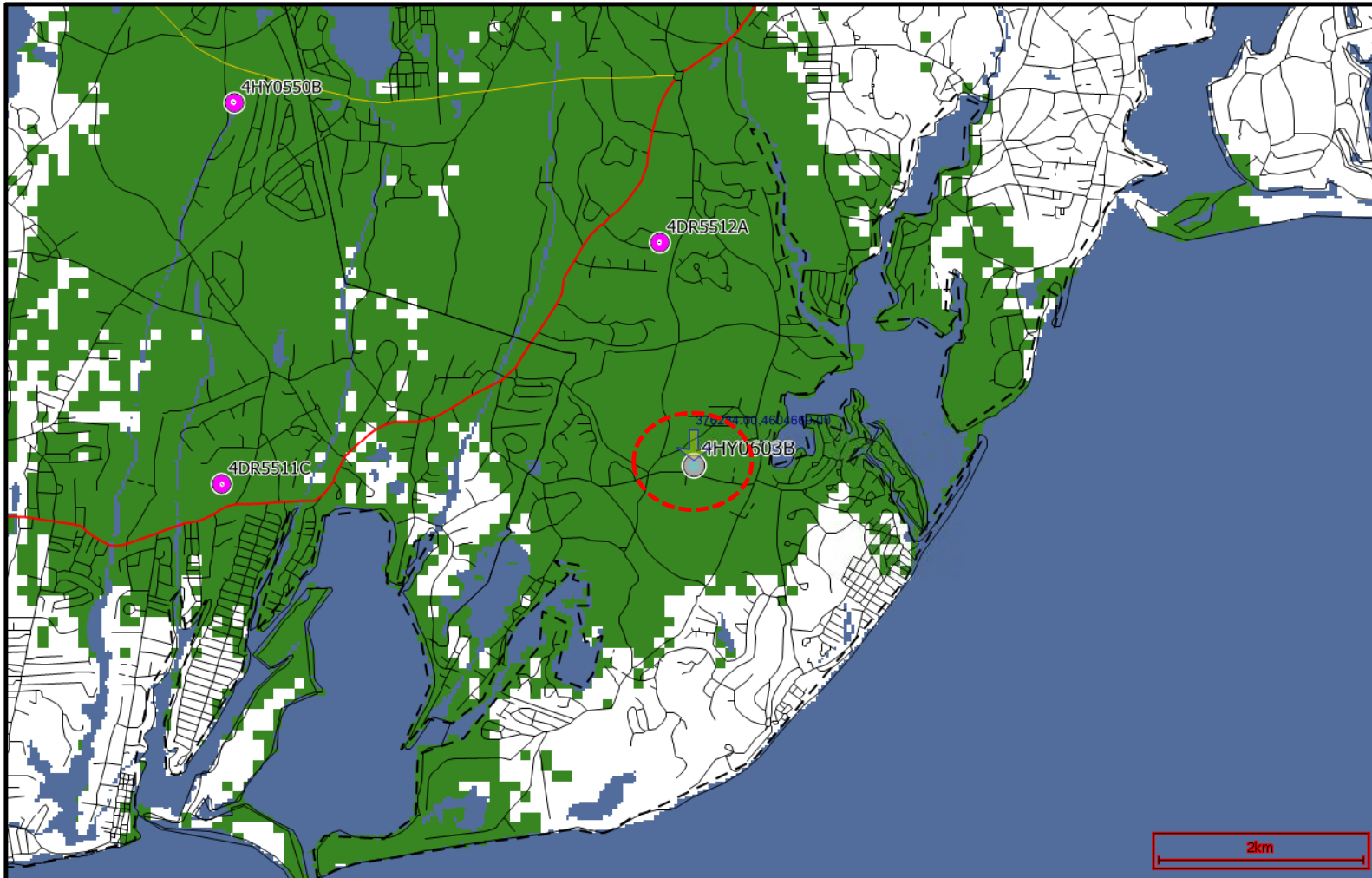
- Other_Road
 Line
Line 1
- Primary_Road
 Line
Line 1
- Secondary_Road
 Line
Line 1
- Neighborhood_Road
 Line
Line 1

Minimum	Maximum	Label	Colour
-97	0	In-Building	Green

2km

9/5/18

Propose LTE 700 MHz Coverage with Primary Candidate at 101 Red Brook Road, Mashpee, MA at Height of 85 Feet



- Existing T-Mobile On-Air Site
- Propose T-Mobile Site

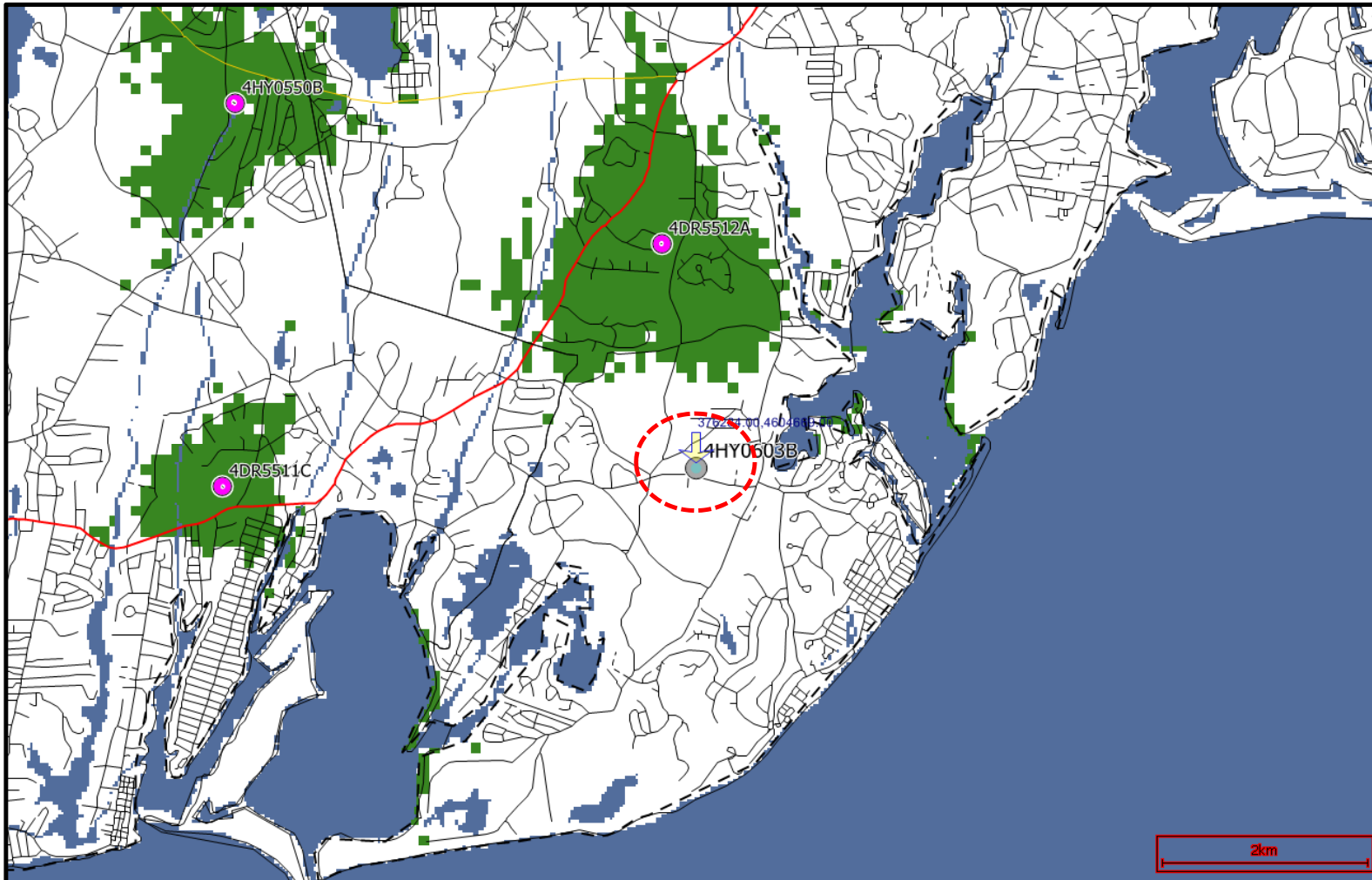
- Other_Road
 Line
Line 1
- Primary_Road
 Line
Line 1
- Secondary_Road
 Line
Line 1
- Neighborhood_Road
 Line
Line 1

Minimum	Maximum	Label	Colour
-97	0	In-Building	Green

2km

9/5/18

Existing LTE L2100 MHz Coverage in Mashpee, MA



- Existing T-Mobile On-Air Site
- Propose T-Mobile Site

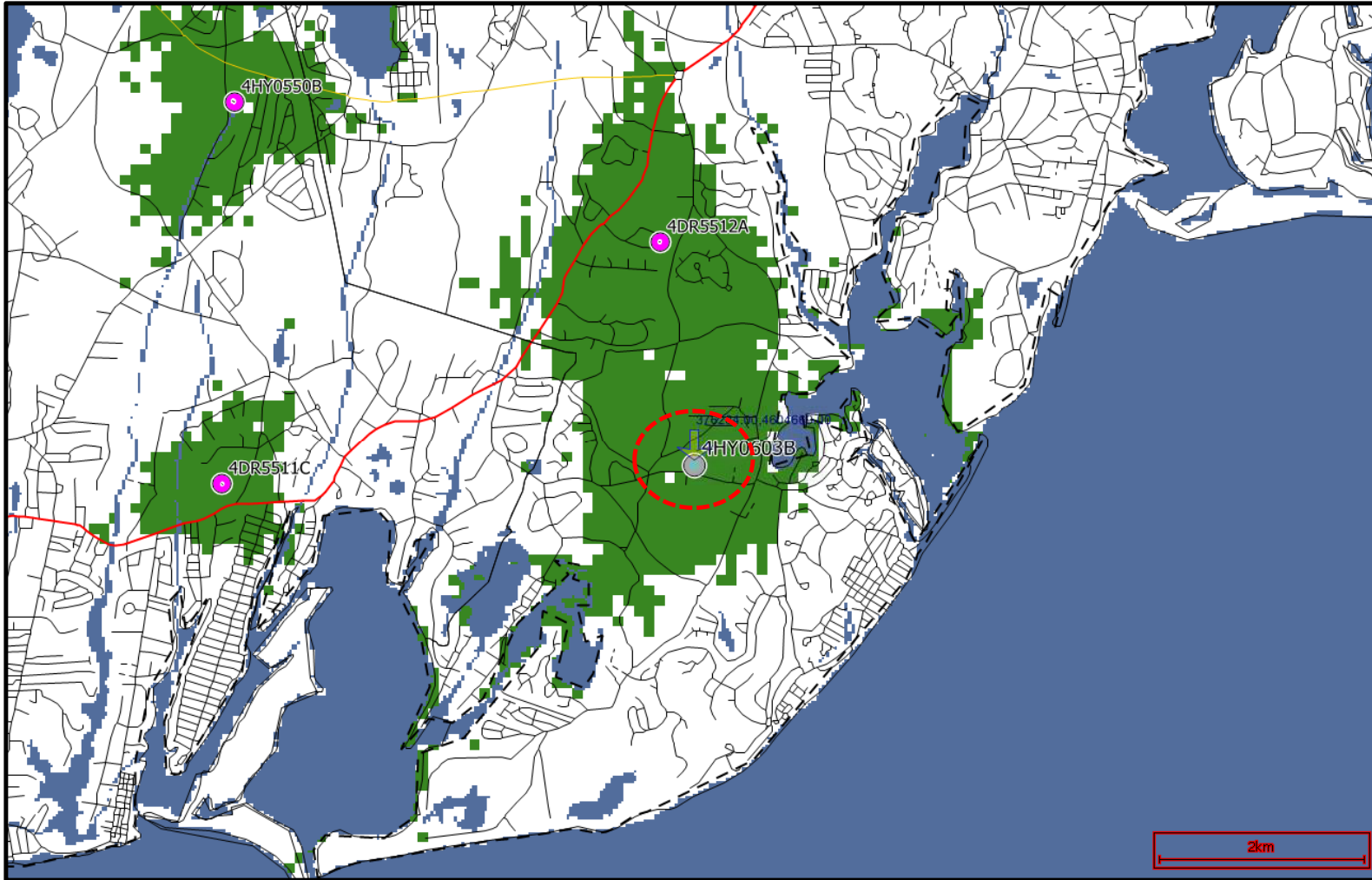
- Other_Road Line 1
- Primary_Road Line 1
- Secondary_Road Line 1
- Neighborhood_Road Line 1

Minimum	Maximum	Label	Colour
-97	0	In-Building	Green

2km

9/5/18

Propose LTE L2100 MHz Coverage with Primary Candidate at 101 Red Brook Road, Mashpee, MA at Height of 135 Feet



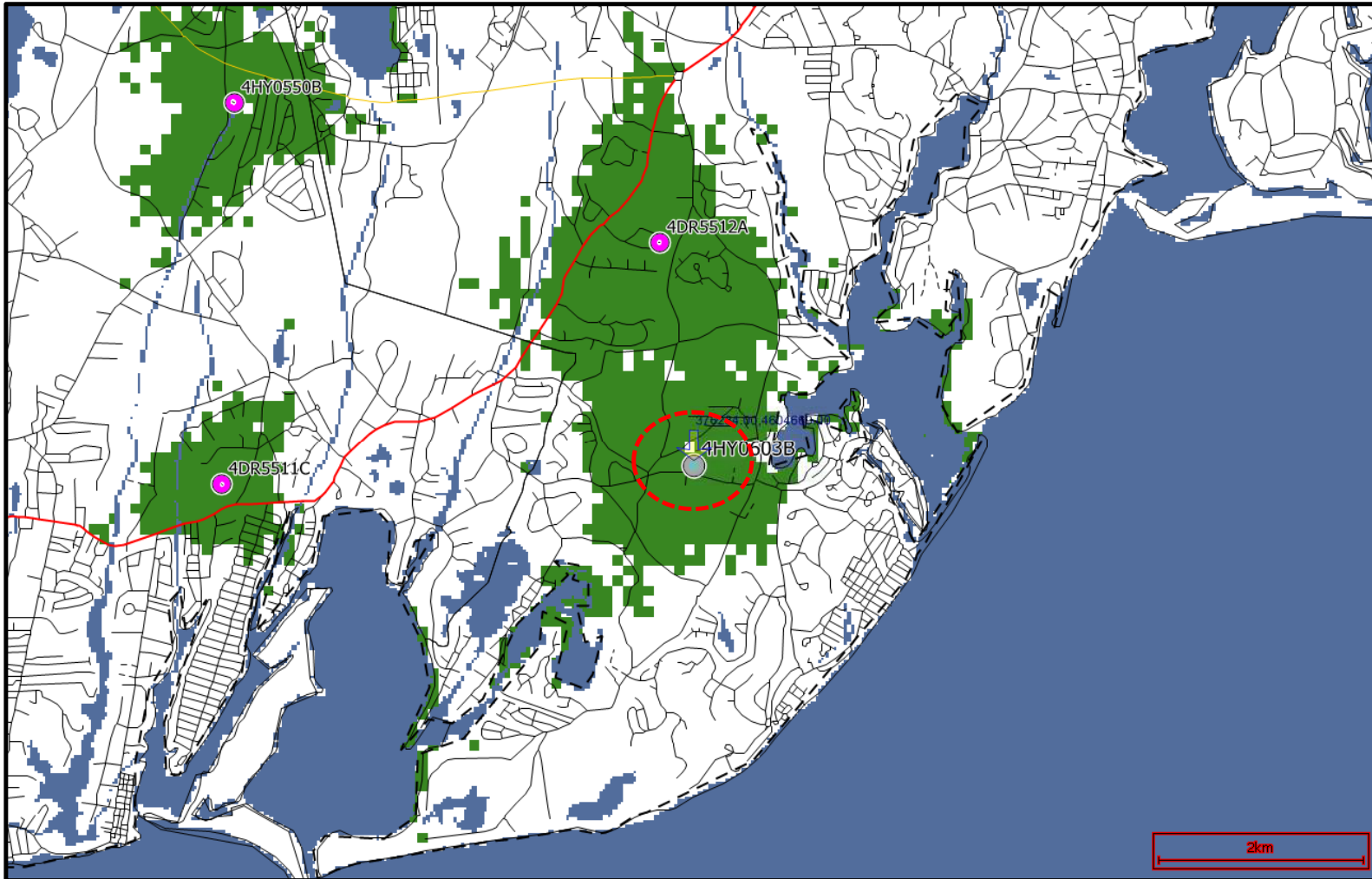
- Existing T-Mobile On-Air Site
- Propose T-Mobile Site

- Other_Road Line Line 1
- Primary_Road Line Line 1
- Secondary_Road Line Line 1
- Neighborhood_Road Line Line 1

Minimum	Maximum	Label	Colour
-97	0	In-Building	

9/5/18

Propose LTE L2100 MHz Coverage with Primary Candidate at 101 Red Brook Road, Mashpee, MA at Height of 110 Feet



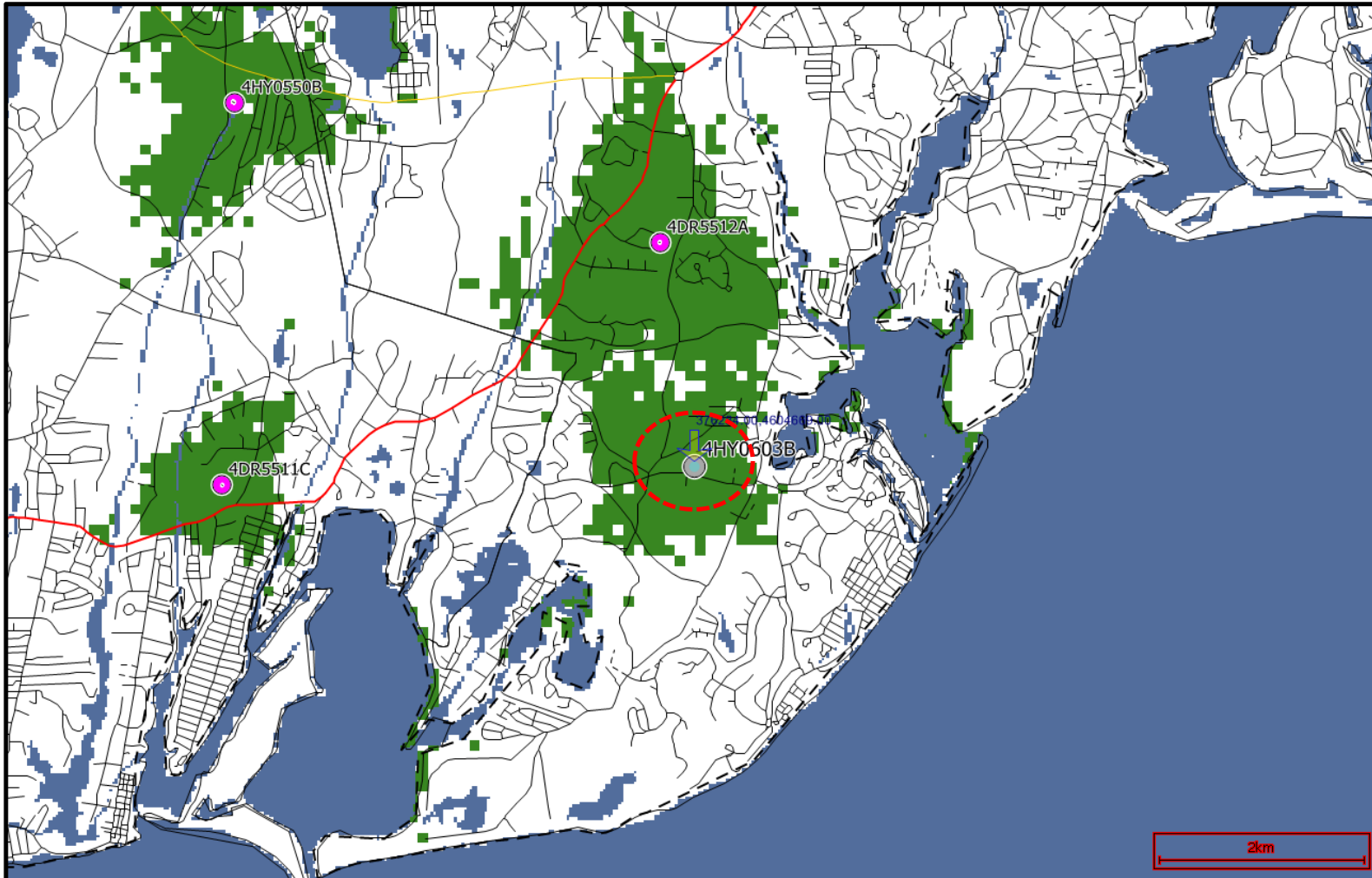
- Existing T-Mobile On-Air Site
- Propose T-Mobile Site

- Other_Road
 Line
Line 1
- Primary_Road
 Line
Line 1
- Secondary_Road
 Line
Line 1
- Neighborhood_Road
 Line
Line 1

Minimum	Maximum	Label	Colour
-97	0	In-Building	Green

9/5/18

Propose LTE L2100 MHz Coverage with Primary Candidate at 101 Red Brook Road, Mashpee, MA at Height of 85 Feet



- Existing T-Mobile On-Air Site
- Propose T-Mobile Site

- Other_Road Line Line 1
- Primary_Road Line Line 1
- Secondary_Road Line Line 1
- Neighborhood_Road Line Line 1

Minimum	Maximum	Label	Colour
-97	0	In-Building	

2km