

RESCOM

Architectural, Inc.

P.O. BOX 157 MONUMENT BEACH, MA 02553
118 WATERHOUSE ROAD, BOURNE, MA 02532

Residential & Commercial
Architecture

Phone (508) 759-9828
Fax (508) 759-9802

CONTACT PERSON GREGORY SIROONIAN

PROJECT

CONVENTION
DATA SERVICES

Technology Park Dr.
Bourne, Massachusetts

COPYRIGHT

THE USER ACKNOWLEDGES THAT THE ARCHITECT'S
DOCUMENTS ARE INSTRUMENTS OF PROFESSIONAL SERVICE
AND ARE BY COMMON COPYRIGHT. THIS DOCUMENT IS THE
PROPERTY OF THE ARCHITECT AND SHALL NOT BE
MODIFIED, AMENDED, OR ALTERED IN ANY WAY. IT IS
ISSUED FOR INFORMATION PURPOSES ONLY. THE USER
AGREES TO HOLD HARMLESS, INDEMNIFY AND DEFEND THE
ARCHITECT AGAINST ANY AND ALL DAMAGES, CLAIMS, AND
LOSSES, INCLUDING DEFENSE COSTS, ARISING OUT OF ANY
USE, REUSE OR COPYING OF THIS DOCUMENT.

DRAWING TITLE

DRAINAGE BASIN &
RAIN GARDEN
PLANTING PLANS

REVISIONS

NO	DATE	DESCRIPTION
1	09-08-16	REV. LANDSCAPING

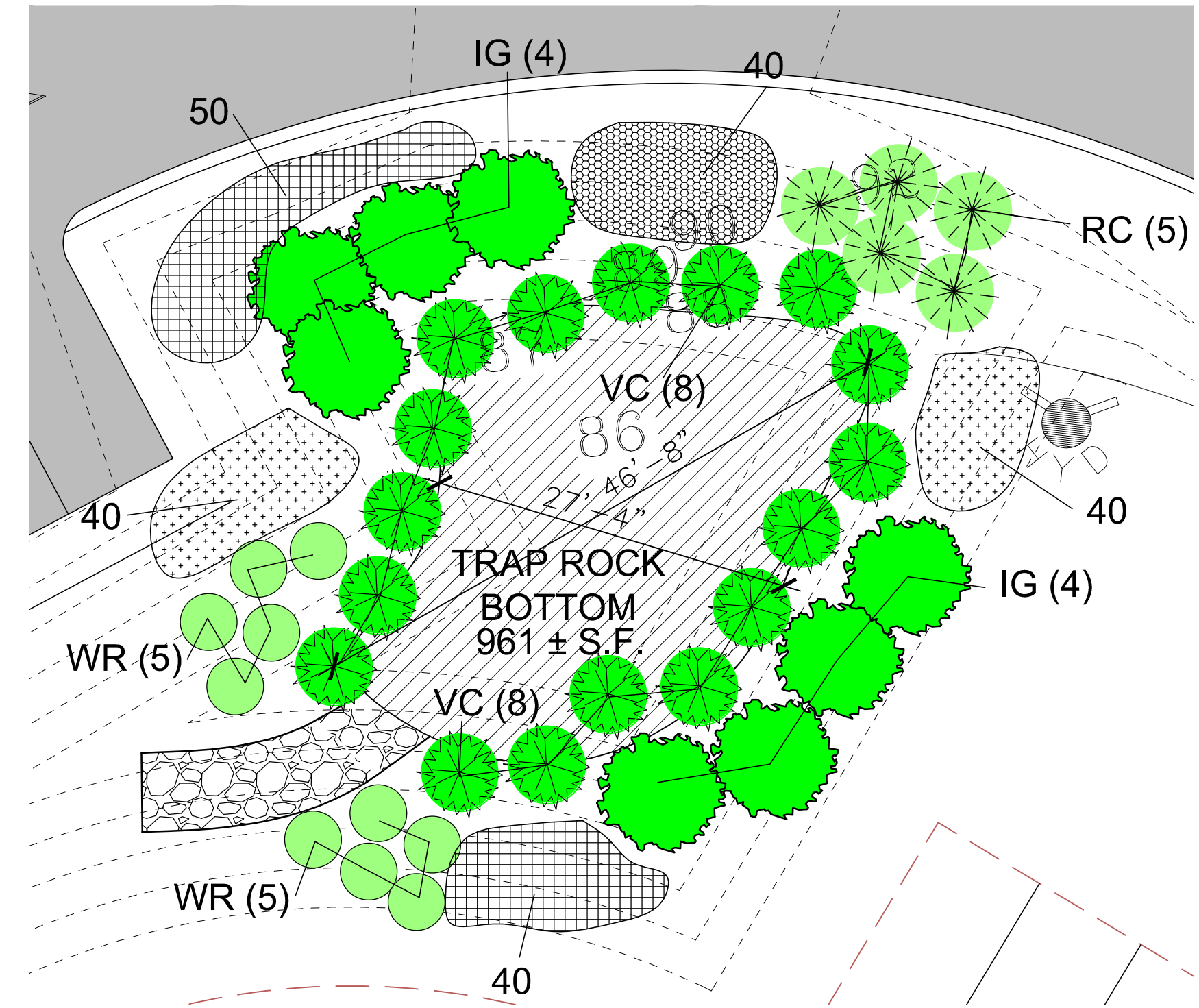
PROJECT NO.

DATE OF ISSUE 07-12-16

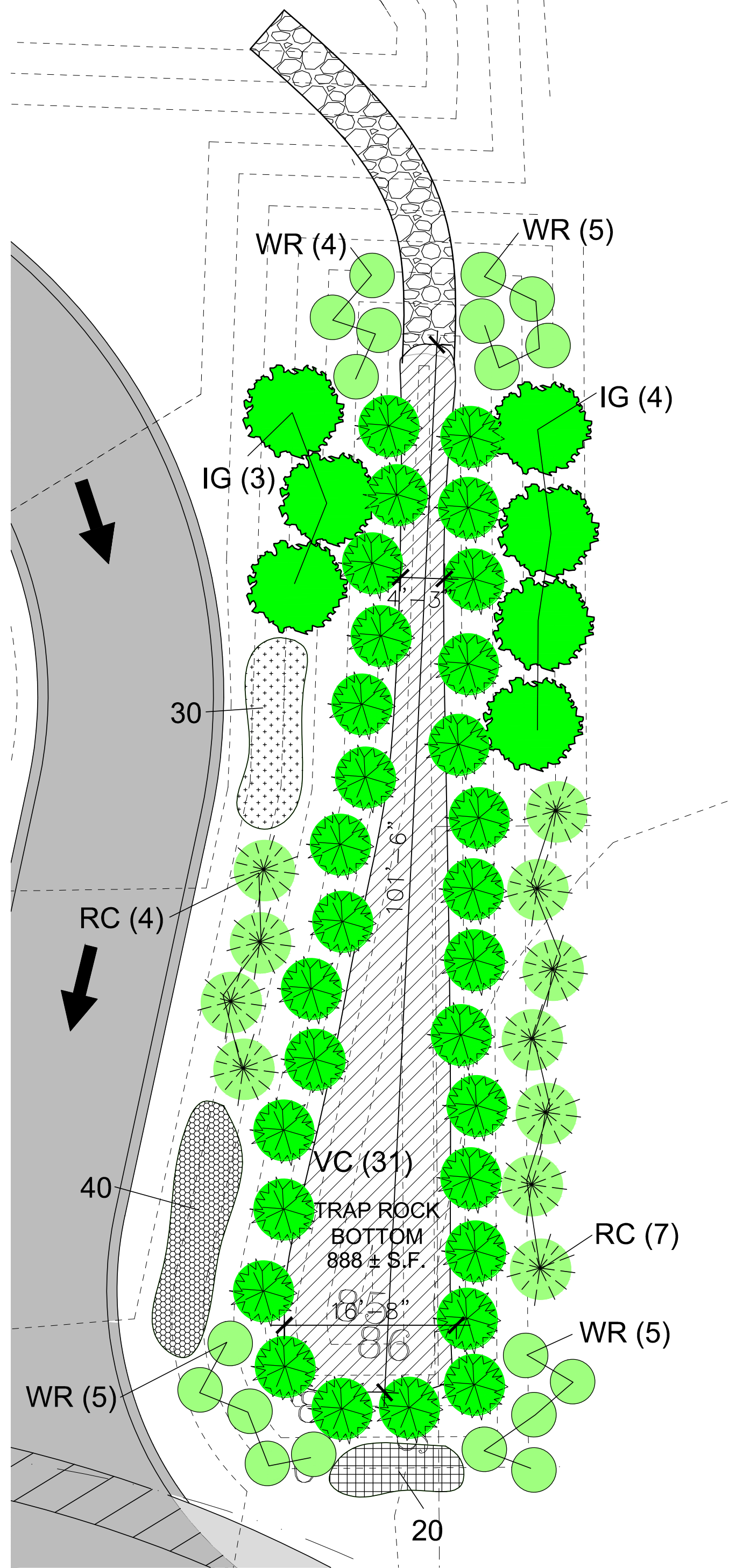
DRAWN BY: MRH CHECKED BY: GBS

DRAWING NUMBER

L1.2

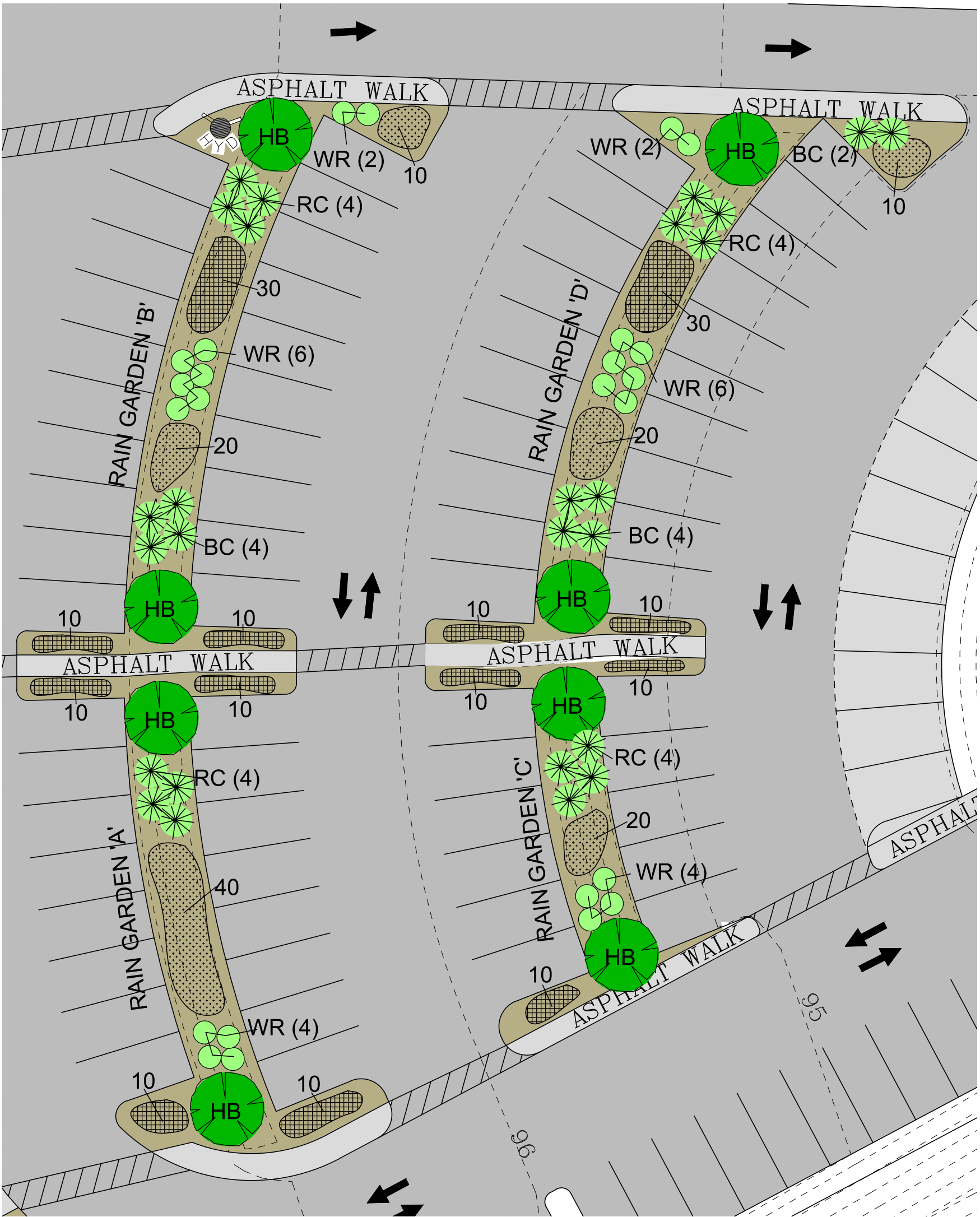


DRAINAGE BASIN 'A' PLANTING PLAN
1"=10'-0"

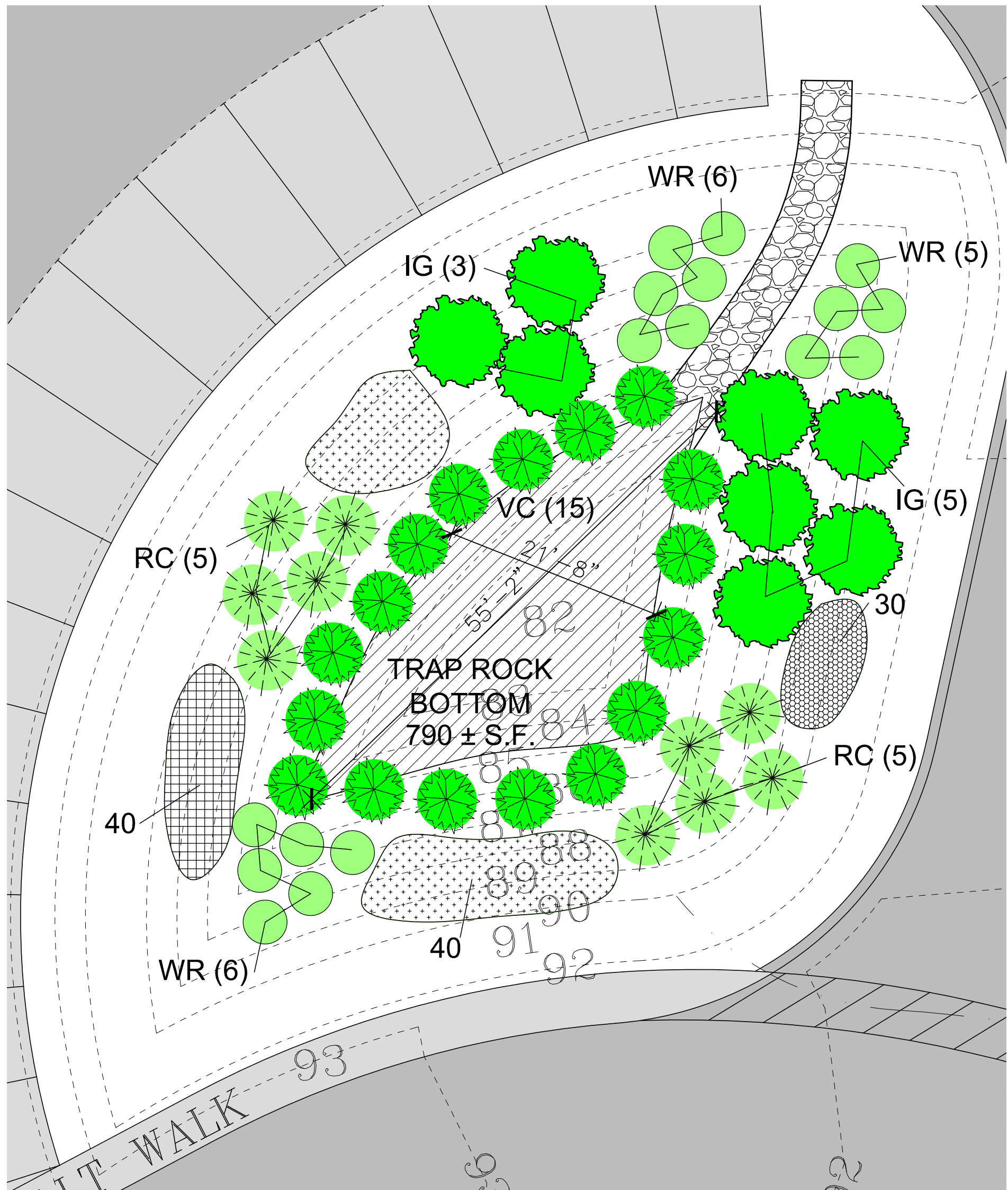


DRAINAGE BASIN 'C' PLANTING PLAN
1"=10'-0"

DRAINAGE SYSTEM & RAINGARDEN PLANT SCHEDULE				
SYMBOL	BOTANICAL NAME	COMMON NAME	QTY	SIZE
SHRUBS				
LG	ILEX GLABRA	INKBERRY		3'-4' HT
VC	VACCINIUM CORIMBOSUM	HIGHBUSH BLUEBERRY		4'-6' HT
RC	ARONIA ARBUTIFOLIA	RED CHOKEBERRY		2'-3' HT
WR	VIBURNUM CASSINOIDES	WILD RAISIN		2'-3' HT
BC	ARONIA ARBUTIFOLIA	BLACK CHOKEBERRY		2'-3' HT
HERBACEOUS				
	ASTER NOVIAE ANGLIAE	NEW ENGLAND ASTER		1'-3'
	HEMEROCALLIS SP.	DAYLILY		1'-3'
	IRIS VERSICOLOR	BLUE FLAG IRIS		1'-3'
TREES				
HB	CARPINUS CAROLINIANA	AMERICAN HORNBEOAM		20'-30' HT
NOTES:				
1. ALL FILL/BACK, FILLING MATERIAL, AND TOPSOIL SHALL BE A LOAMY SAND WITH A PERMEABILITY RATE OF 5 MPT AND FASTER. ENGINEER SHALL APPROVE ALL FILLING MATERIAL AND TOP SOIL.				



RAIN GARDEN PLANTING PLAN
1"=20'-0"



DRAINAGE BASIN 'B' PLANTING PLAN
1"=10'-0"

Jon Idman, Esq., Chief Regulatory Officer
Jeffrey Ribeiro, Regulatory Officer II
Cape Cod Commission
3225 Main Street
Barnstable, MA 02630

Re: Convention Data Services Headquarters Project

Dear Jon and Jeffrey:

Enclosed please find one hard copy of the revised landscape plan for Convention Data Services Headquarters Project, dated July 12, 2016 and revised September 8, 2016.

Thank you for your assistance with this project.

Sincerely,

Gregory B. Siroonian

Gregory B. Siroonian
President

Copy: Eliza Cox

From: [Sharon Rooney](#)
To: [Jonathon Idman](#); "[Eliza Cox \(ECox@nutter.com\)](#)"
Cc: [Greg Siroonian](#); "[Jack Landers cauley \(JLANDERSCA@aol.com\)](#)"; [Jeffrey Ribeiro](#); [Sarah Korjeff](#); [Chloe Schaefer](#)
Subject: RE: Convention Data Services - Revised Landscape Plan
Date: Thursday, September 8, 2016 3:05:04 PM

Hi all,

I just left a message for Greg that the revised landscape plan complies with the RPP standards. I appreciate the effort to address our concerns and the cooperation of the applicant in this regard.

Thank you,

Sharon



From: Jonathon Idman
Sent: Thursday, September 08, 2016 8:42 AM
To: 'Eliza Cox (ECox@nutter.com)'
Cc: Greg Siroonian; 'Jack Landers cauley (JLANDERSCA@aol.com)'; Jeffrey Ribeiro; Sarah Korjeff; Chloe Schaefer; Sharon Rooney
Subject: FW: Convention Data Services - Revised Landscape Plan

Hi Liza,

Jeff is out of the office and will return to the office on Monday. I think the architect could reach out directly to Sharon, who I've copied on this email (including the attached plan). For the application, the owner of the abutting southerly property should provide consent to the buffer proposed on its property, if staff agrees with this landscaping approach. Jon

From: Eliza Cox [<mailto:ECox@nutter.com>]
Sent: Wednesday, September 07, 2016 4:36 PM
To: Jonathon Idman; Jeffrey Ribeiro
Cc: Greg Siroonian; 'Jack Landers cauley (JLANDERSCA@aol.com)'
Subject: Convention Data Services - Revised Landscape Plan

Hello Jon and Jeffrey,

I am forwarding a revised landscape plan for the CDS headquarters redevelopment based on our meeting of last week. As requested, the plan was revised to include the following:

- 1.) Additional plantings to supplement the natural buffer in the northeast corner.
- 2.) Redefined the landscape buffer along MacArthur Boulevard, including carrying the landscaping to the immediately adjacent property. As discussed, given the topography and the visual orientation from the roadway, this adjoining lot is far more visible than the subject

property and the Trust's agreement to plant along this site will make a significant difference along MacArthur Boulevard.

3.) Different and additional plantings are proposed in and around the rain gardens.

All of the plants selected are from the CCC's approved plant list and, as you'll see, primarily evergreens are proposed for the buffers.

If at all possible, we would like to set up a time to speak by phone with CCC staff (Sharon?) tomorrow to get feedback on this revised landscape plan. Should I have our architect reach out to Sharon directly or is that something that I should schedule through you?

Thank you very much.

Best,

Liza



Eliza Cox
Nutter McClennen & Fish LLP
[Direct / 508-790-5431](tel:5087905431)

This Electronic Message contains information from the law firm of Nutter, McClennen & Fish, LLP, which may be privileged and confidential. The information is intended to be for the use of the addressee only. If you have received this communication in error, do not read it. Please delete it from your system without copying it, and notify the sender by reply e-mail, so that our address record can be corrected. Thank you.