

Schematic Design Package

Cape Cod FSU, Hyannis, MA

Cape Cod FSU

03545

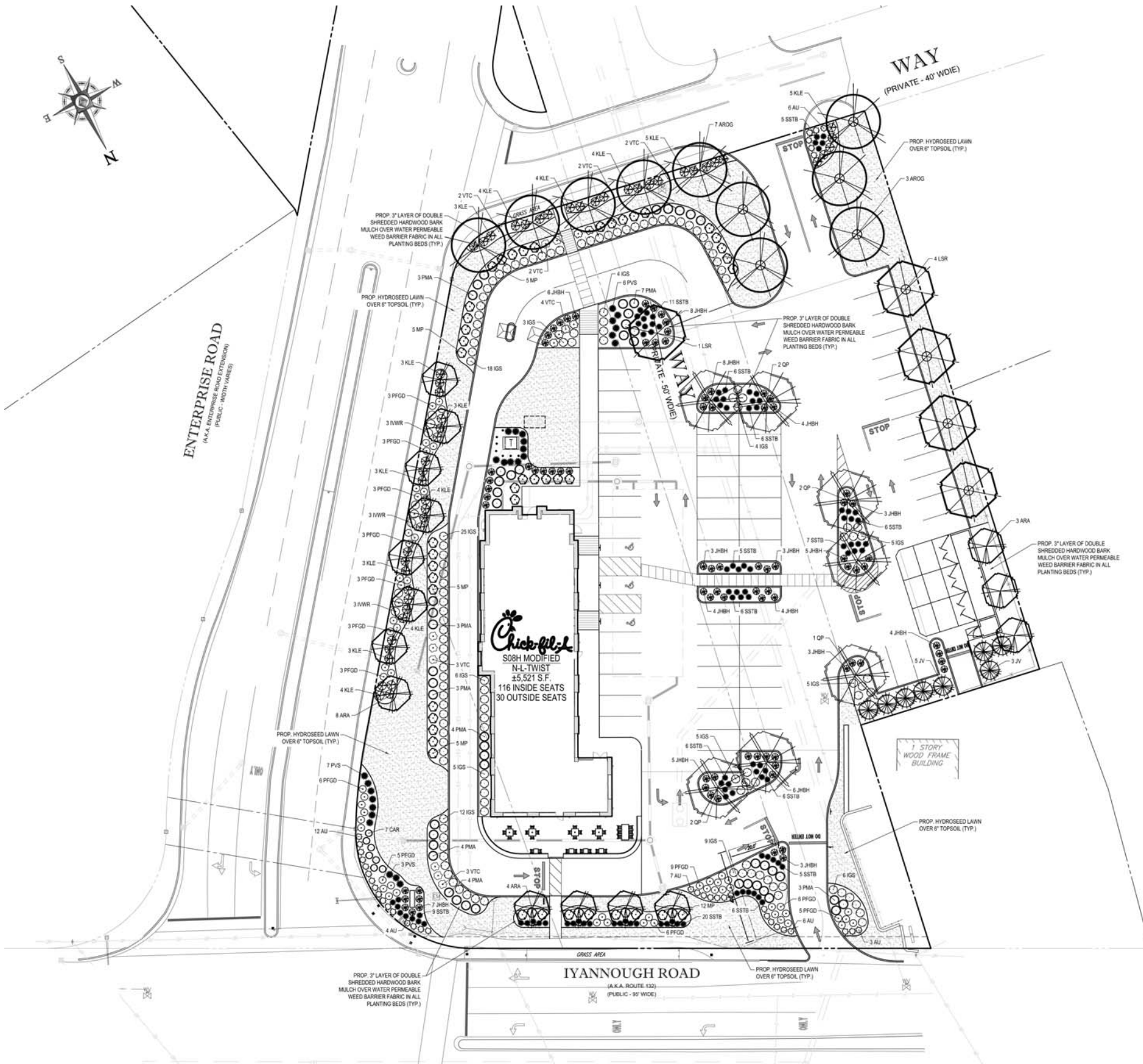


10/27/15



Cape Cod FSU, Hyannis, MA - Store #03545

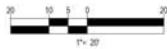
*The Chick-fil-A Schematic Design Package represents a brand compliant design solution.
Site adapt professionals are responsible for application of design and compliance of ordinances and codes.*



LANDSCAPE SCHEDULE					
KEY	QTY.	BOTANICAL NAME	COMMON NAME	SIZE	REMARKS
SHADE TREE(S)					
ARA	15	ACER RUBRUM 'ARMSTRONG'	ARMSTRONG COLUMNAR RED MAPLE	3" CAL.	B+B
AROG	10	ACER RUBRUM 'OCTOBER GLORY'	OCTOBER GLORY RED MAPLE	3" CAL.	B+B
LSR	5	LIQUIDAMBAR STYRACIFLUA 'ROTUNDILOBA'	SEEDLESS SWEETGUM	3" CAL.	B+B
QP	7	QUERCUS PALUSTRIS	PIN OAK	3" CAL.	B+B
SUBTOTAL: 37					
EVERGREEN TREE(S)					
JN	8	JUNIPERUS VIRGINIANA	EASTERN RED CEDAR	8-10'	B+B
SUBTOTAL: 8					
DECIDUOUS SHRUB(S)					
CAR	7	CLETHRA ALNIFOLIA 'ROSEA'	PINK SUMMERSWEET CLETHRA	24-30"	#3 CAN
IWR	9	ILEX VERTICILLATA 'WINTER RED'	WINTER RED WINTERBERRY HOLLY	30-36"	#5 CAN
MP	49	MYRICA PENSYLVANICA	NORTHERN BAYBERRY	30-36"	B+B
PFGD	56	POTENTILLA FRUTICOSA 'GOLD DROP'	GOLD DROP CINQUEFOIL	15-18"	#3 CAN
PMA	51	PRUNUS MARITIMA	BEACH PLUM	3'-4'	B+B
VTC	14	VIBURNUM TRILOBUM 'COMPACTUM'	COMPACT AMERICAN CRANBERRYBUSH	24-30"	B+B
SUBTOTAL: 188					
EVERGREEN SHRUB(S)					
IGS	127	ILEX GLABRA 'SHAMROCK'	SHAMROCK INKERRY HOLLY	24-30"	#5 CAN
IWR	9	ILEX VERTICILLATA 'WINTER RED'	WINTER RED WINTERBERRY HOLLY	30-36"	#5 CAN
KLE	52	KALMIA LATIFOLIA 'ELF'	ELF MOUNTAIN LAUREL	24-30"	B+B
SUBTOTAL: 188					
GROUND COVER(S)					
AU	38	ARCTOSTAPHYLOS UVA-URSI	BEARBERRY	12-15"	#2 CAN
JHB	83	JUNIPERUS HORIZONTALIS 'BAR HARBOR'	BAR HARBOR CREEPING JUNIPER	15-18" SPRD.	#3 CAN
SUBTOTAL: 121					
ORNAMENTAL GRASS(ES)					
PVS	26	PANICUM VIRGATUM 'SHENANDOAH'	SHENANDOAH SWITCH GRASS	2 GAL.	CONTAINER
SSB	104	SCHIZACHYRIUM SCOPARIUM 'THE BLUES'	LITTLE BLUE STEM	2 GAL.	CONTAINER
SUBTOTAL: 130					

VILLAGE OF HYANNIS LANDSCAPE REQUIREMENTS			
SECTION OF BY-LAW	DESCRIPTION	REQUIRED	PROPOSED
240-25 E	THE FRONT YARD LANDSCAPED SETBACK SHALL BE LANDSCAPED WITH A COMBINATION OF GRASSES, TREES AND SHRUBS COMMONLY FOUND ON CAPE COD. A MINIMUM OF ONE STREET TREE WITH A MINIMUM CALIPER OF 3" SHALL BE PROVIDED PER 30 FEET OF ROAD FRONTAGE DISTRIBUTED THROUGHOUT THE FRONT YARD SETBACK AREA. 1 TREE PER 30 LF OF FRONTAGE IN FRONT YARD 235.6 LF / 30 = 8 TREES	8 TREES	18 TREES
240-39 J(3)(b)	LANDSCAPING SHALL BE PROVIDED AT A RATE OF ONE TREE OF 3" CAL PER EIGHT SPACES, AND SUCH TREES SHALL BE LOCATED WITHIN THE PARKING AREA. 1 TREE PER 8 SPACES LOCATED WITHIN PARKING AREA 62 SPACES / 8 = 8 TREES SUCH PARKING AREA LANDSCAPING AREAS SHALL CONSTITUTE NOT LESS THAN 5% OF THE LAND AREA DEVOTED TO GRADE-LEVEL PARKING FIELDS. 26,053 SF PARKING AREA x 0.05 = 1,303 SF LANDSCAPING AREAS	8 TREES 1,303 SF	12 TREES 1,604 SF

THIS PLAN TO BE UTILIZED FOR
LANDSCAPE PURPOSES ONLY

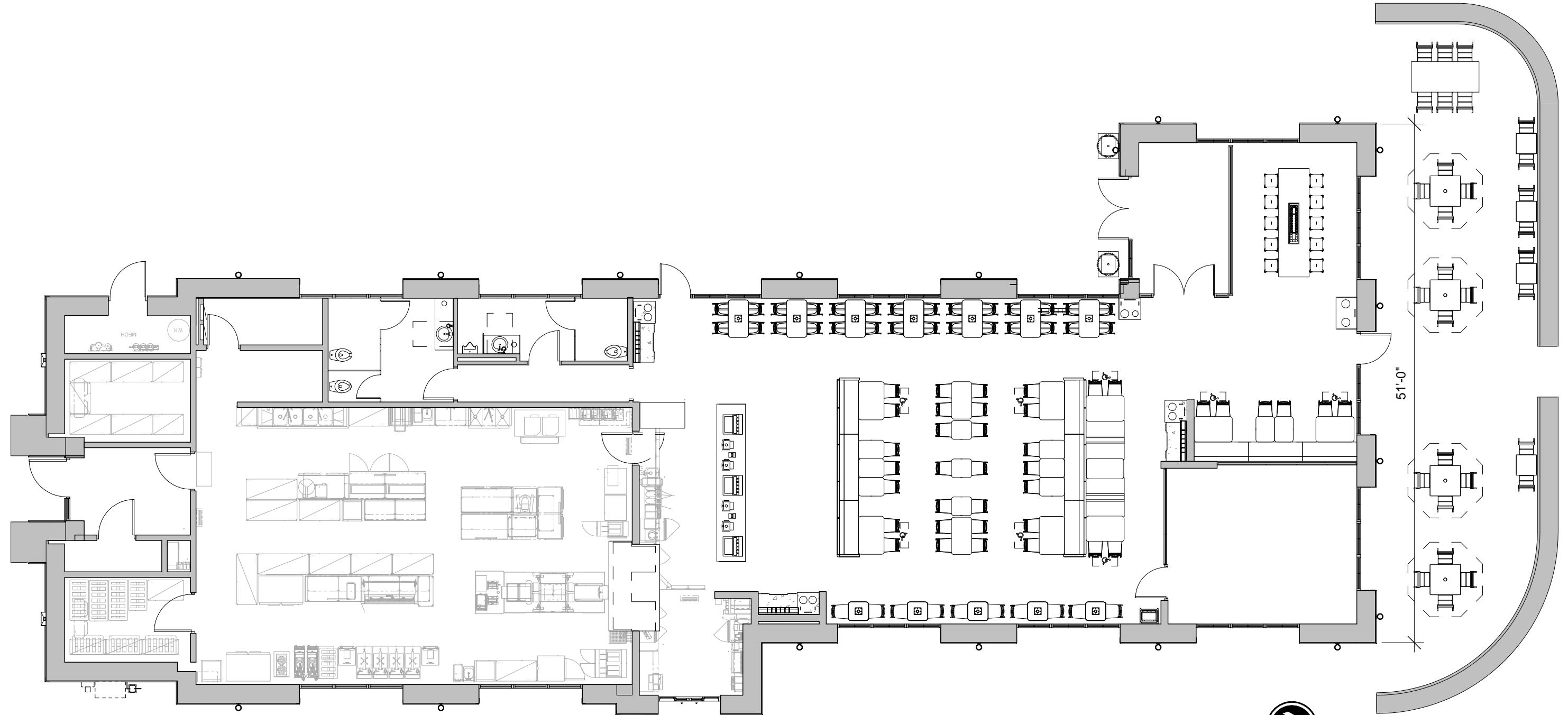


10/27/15

Site Plan

Cape Cod FSU, Hyannis, MA - Store #03545

The Chick-fil-A Schematic Design Package represents a brand compliant design solution. Site adapt professionals are responsible for application of design and compliance of ordinances and codes.



SEAT COUNT:
INTERIOR: 114 SEATS
EXTERIOR: 30 SEATS
TOTAL: 144 SEATS

CONDITIONED BLDG:
4754 S.F.
SERVICE YARD:
90 S.F.



10/27/15

Floor Plan

Cape Cod FSU, Hyannis, MA - Store #03545

*The Chick-fil-A Schematic Design Package represents a brand compliant design solution.
Site adapt professionals are responsible for application of design and compliance of ordinances and codes.*



NORTH ELEVATION



SOUTH ELEVATION

10/27/15

Exterior Elevations (North & South)



Cape Cod FSU, Hyannis, MA - Store #03545

*The Chick-fil-A Schematic Design Package represents a brand compliant design solution.
Site adapt professionals are responsible for application of design and compliance of ordinances and codes.*



WEST ELEVATION



EAST ELEVATION

10/27/15

Exterior Elevations (West & East)



Cape Cod FSU, Hyannis, MA - Store #03545

*The Chick-fil-A Schematic Design Package represents a brand compliant design solution.
Site adapt professionals are responsible for application of design and compliance of ordinances and codes.*



10/27/15

Exterior Perspective



Cape Cod FSU, Hyannis, MA - Store #03545

*The Chick-fil-A Schematic Design Package represents a brand compliant design solution.
Site adapt professionals are responsible for application of design and compliance of ordinances and codes.*



10/27/15

Exterior Perspective



Cape Cod FSU, Hyannis, MA - Store #03545

*The Chick-fil-A Schematic Design Package represents a brand compliant design solution.
Site adapt professionals are responsible for application of design and compliance of ordinances and codes.*



10/27/15

Exterior Perspective



Cape Cod FSU, Hyannis, MA - Store #03545

*The Chick-fil-A Schematic Design Package represents a brand compliant design solution.
Site adapt professionals are responsible for application of design and compliance of ordinances and codes.*



10/27/15

Exterior Perspective



Cape Cod FSU, Hyannis, MA - Store #03545

*The Chick-fil-A Schematic Design Package represents a brand compliant design solution.
Site adapt professionals are responsible for application of design and compliance of ordinances and codes.*



10/27/15

Exterior Perspective



Cape Cod FSU, Hyannis, MA - Store #03545

*The Chick-fil-A Schematic Design Package represents a brand compliant design solution.
Site adapt professionals are responsible for application of design and compliance of ordinances and codes.*



10/27/15

Exterior Perspective



Cape Cod FSU, Hyannis, MA - Store #03545

*The Chick-fil-A Schematic Design Package represents a brand compliant design solution.
Site adapt professionals are responsible for application of design and compliance of ordinances and codes.*