



Eliza Cox

Direct Line: (508) 790-5431

Fax: (508) 771-8079

E-mail: ecox@nutter.com

April 21, 2017
0117702-00001

By Hand Delivery and By Email

Jon Idman, Esq., Chief Regulatory Officer
Cape Cod Commission
3225 Main Street
Barnstable, MA 02630

Re: S-L Snacks MA, LLC - Cape Cod Potato Chip Factory Renovation and Expansion Project

Dear Jon:

On behalf of my client, S-L Snacks MA, LLC, and to supplement the Limited DRI application filed in the above matter, I enclose the following materials, primarily in response to the preliminary comments that you forwarded from Sarah Korjeff:

1. Proposed roof plan entitled "Roof Plan Overall" (Sheet A1400) prepared by Stellar Engineering dated last revised on April 14, 2017;
2. Revised building elevation plan entitled "Exterior Elevations" (Sheet A3101) prepared by Stellar Engineering dated last revised on April 14, 2017, which contains additional details regarding building materials and colors. In addition, as shown on the plan, the overall height of the proposed office/tour area addition has been lowered by approximately 3 feet to match the height of the existing building;
3. Product data information for the proposed James Hardie siding and shake materials specified on the enclosed building elevation plan;
4. Two (2) full size stamped copies of the project plan set. This set includes the plans submitted with the Limited DRI application (Tab 18) but has been updated with the two plans referenced in nos. 1 and 2 above.
5. Materials board showing the proposed exterior building materials.

Relative to Sarah's question about the windows, the proposed round window shown primarily on the second story of the addition is the Marvin Window "Rotary Window." The proposed elevation plan depicts a 48 inch diameter window 18'-1" AFF to center. The square windows are 6'-0" x 6'-0" Marvin Windows with trim. The windows are very customizable and

Jon Idman, Esq., Chief Regulatory Officer

April 21, 2017

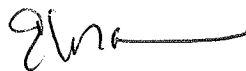
Page 2

the design team is working to refine this element to ensure that the glazing, etc., are appropriate for the area of installation.

Please let me know if you have any questions. Thank you very much.

With best regards, I remain,

Very truly yours,

A handwritten signature in dark ink, appearing to read 'Eliza Cox', with a long horizontal flourish extending to the right.

Eliza Cox

EZC:

Enclosures

cc: Elizabeth Jenkins, Director, Growth Management Department (w/ #1, #2, #3 and photograph of materials board referenced #5)

Beth Rueschhoff, Snyder's Lance, Inc. (w/o encls.)

Francisco Resurreccion, Stellar Engineering (w/o encls.)

3568203.1

4/14/2017 11:34:55 AM

C:\Revit\Local\06014\ch_Condition.rvt

Welfare Roof:
Drainable Area (10yr) = 230 sq. ft.
Drainable Area (100yr) = 170 sq. ft.
Used for Calculations = 10 yr.
Plan Area = 5150 sq. ft.
Gutter length = 206 ft.
Max Gutter Served by Each DS = 27 ft.

Design Area = 5150 sq. ft.
Minimum Number of DS = 8
Max Roof Area Served by Each DS = 675 sq. ft.

Min. Gutter Width = 4 in.
Min. Gutter Depth = 4 in.
Actual = 5 in. x 5 in.

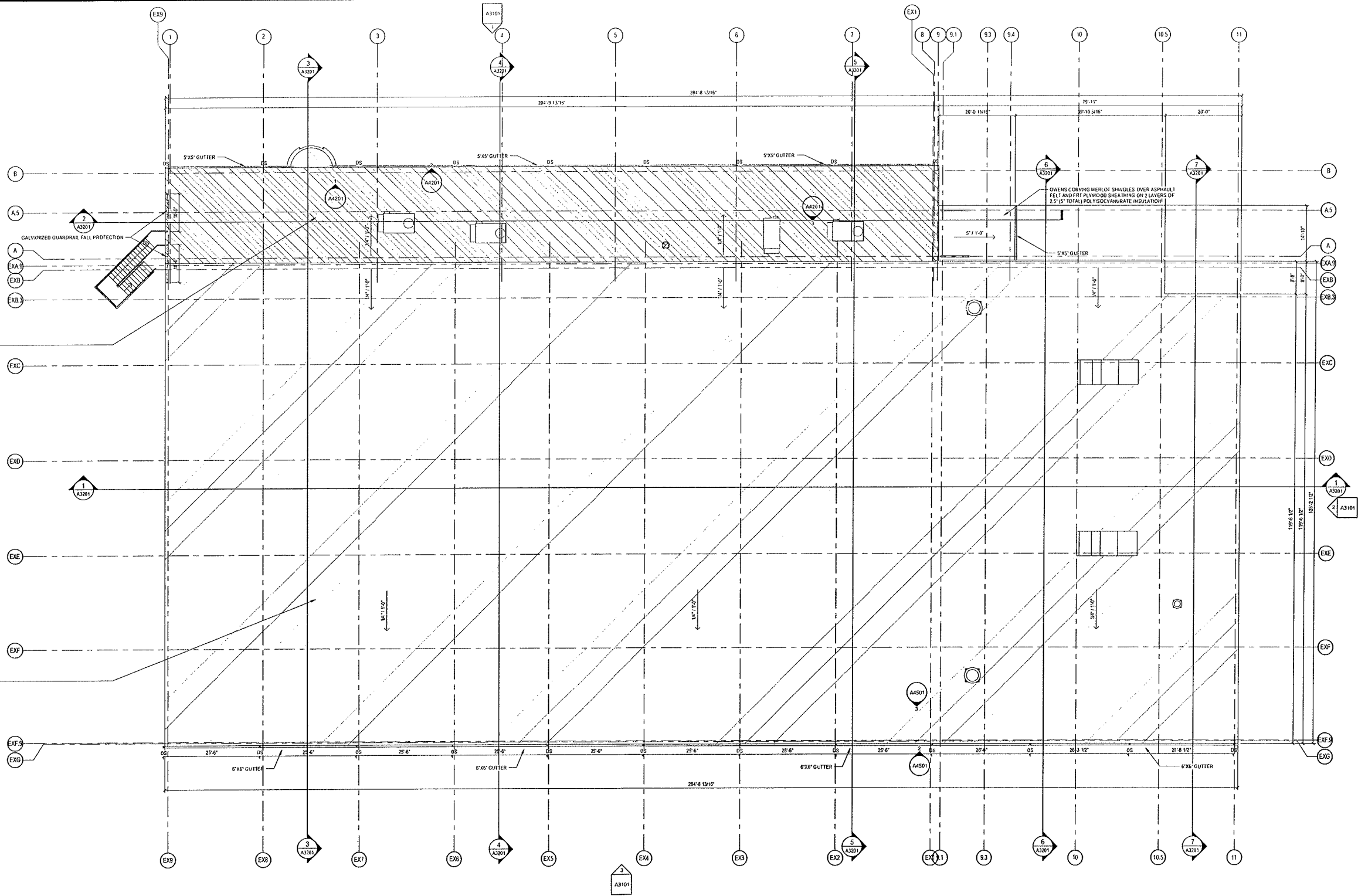
Min. Downspout Size = 1.75 in. x 2.25 in.
Actual Downspout Size = 4 in. x 4 in.

Processing Warehouse Roof:
Drainable Area (10yr) = 230 sq. ft.
Drainable Area (100yr) = 170 sq. ft.
Used for Calculations = 10 yr.
Plan Area = 36894 sq. ft.
Gutter length = 286 ft.
Max Gutter Served by Each DS = 26 ft.

Design Area = 36894 sq. ft.
Minimum Number of DS = 11
Max Roof Area Served by Each DS = 3354 sq. ft.

Min. Gutter Width = 6 in.
Min. Gutter Depth = 6 in.

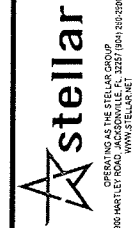
Min. Downspout Size = 3.75 in. x 4.75 in.
Actual Downspout size = 5 in. x 5 in.



1 ROOF PLAN OVERALL
SCALE: 3/32" = 1'-0"



ROOF DRAINAGE CALCULATIONS			
REFERENCE: SMACNA Architectural Sheet Metal Manual, 7th edition (SMACNA)			
RAINFALL INTENSITY: Massachusetts, Boston SMACNA (Table 1-2A) Rainfall Intensity (10yr) = 5.3 in./hr. Rainfall Intensity (100yr) = 7.2 in./hr.			
ROOF TYPE: MECHANICALLY ATTACHED 60 MIL., SINGLE PLY T.P.O. (THERMOPLASTIC POLYOLEFIN) ROOF MEMBRANE OVER 2 LAYERS OF 2 1/2" THICK (5' TOTAL) POLYISOCYANURATE INSULATION (R-30 MIN.) OVER 1 1/2" GALVANIZED METAL DECK. (RDOF OVER WELFARE AREA AND PROCESSING PLANT WAREHOUSE)			



SNYDER'S-LANCE
FACILITY RENOVATIONS AND ADDITIONS
Hyannis, MA

ROOF PLAN
OVERALL

© The Stellar Group 2016. Copyright
The Stellar Group 2016.
All rights reserved. No part of this work
may be used, reproduced, distributed,
modified, or otherwise communicated in
any form or by any means without the
prior written consent of The Stellar
Group, Inc.

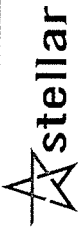
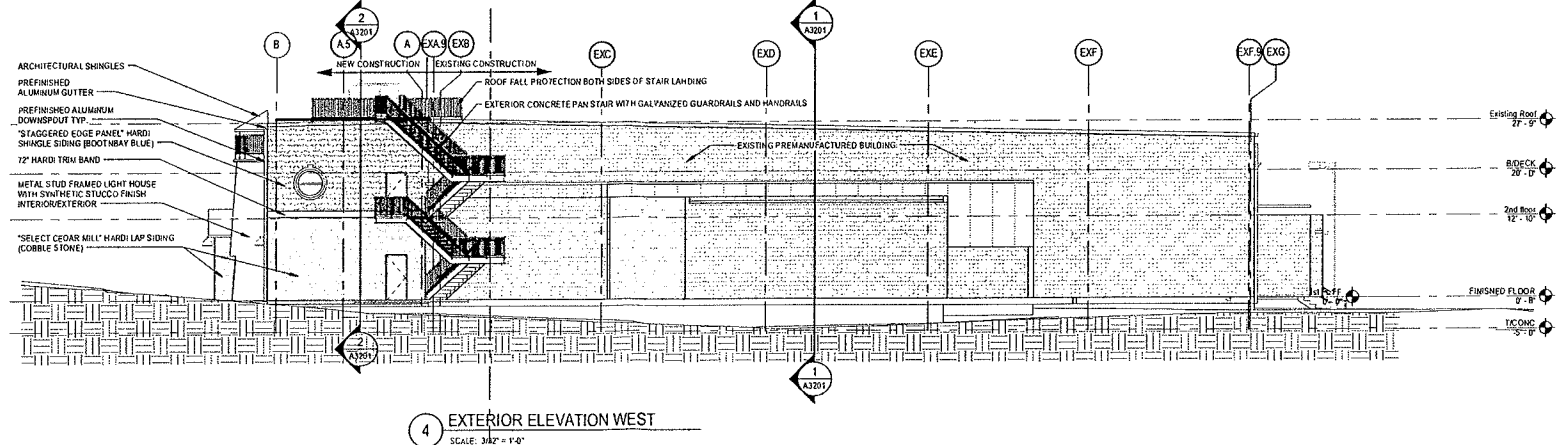
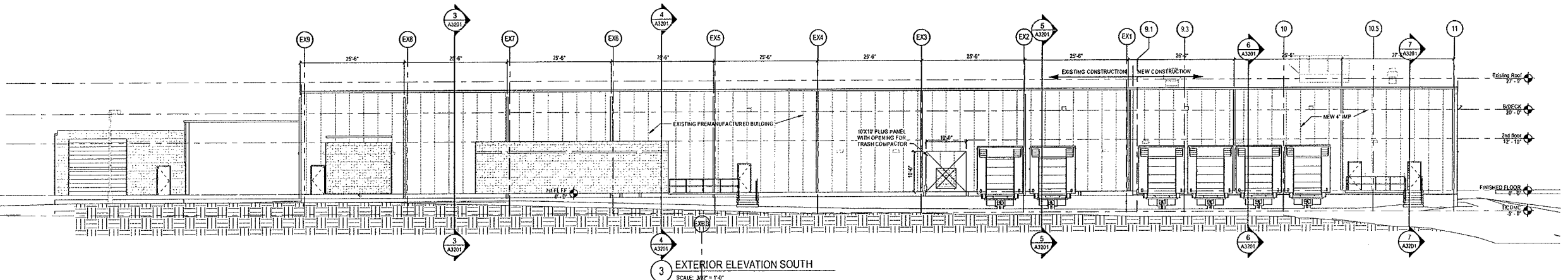
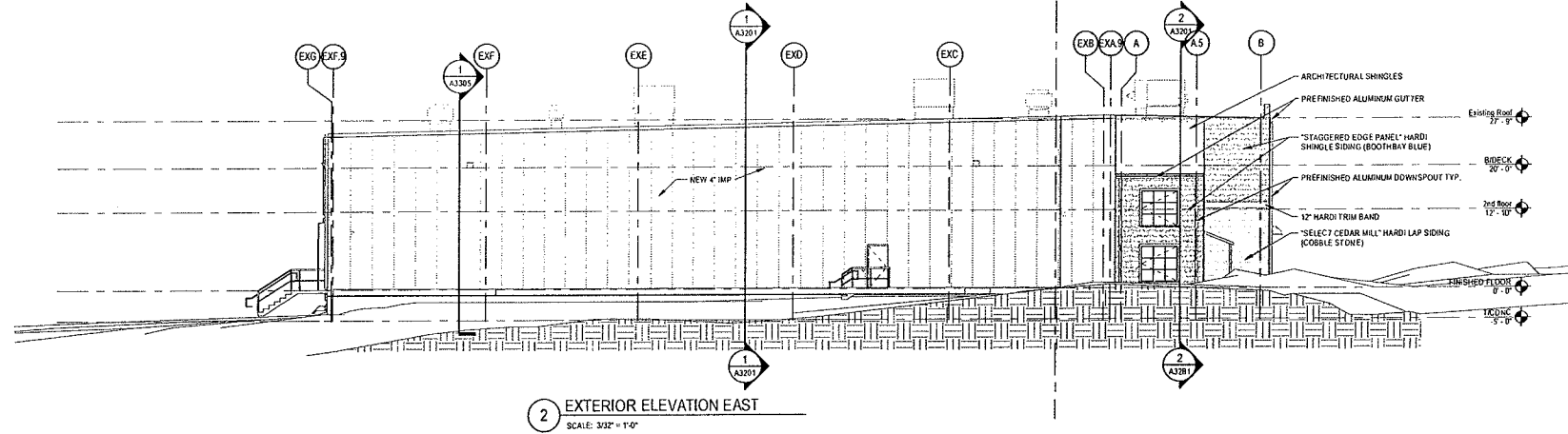
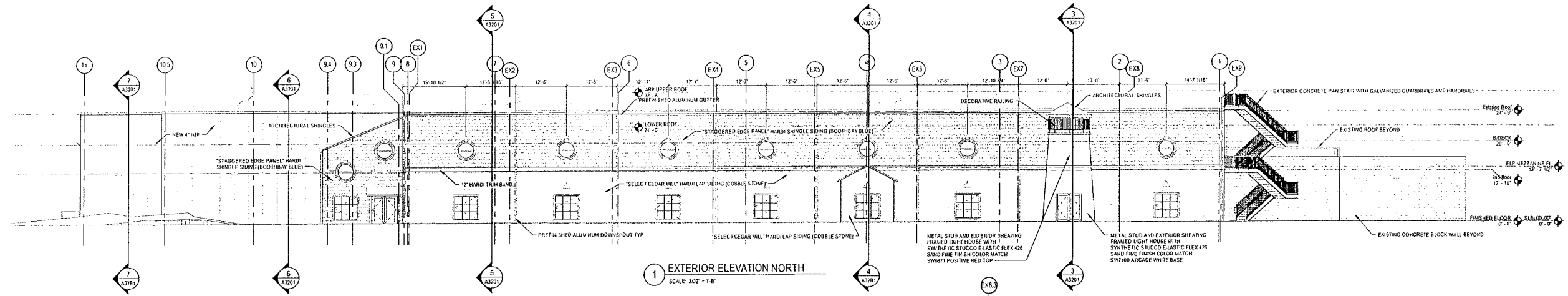
NO.	DATE	BY	DESCRIPTION
1	4/14/2017	TJS	ISSUE
2	4/14/2017	TJS	OWNER REVIEW
3	4/14/2017	TJS	OWNER REVIEW

JOB NO: 73006001
DRAWN: Author
CHECKED: Checker
SCALE: 3/32" = 1'-0"

A1400
DRAWING NO.

4/14/2017 11:48:08 AM

C:\Revit\Local\0800\Arch_Gonellishin.rvt



OPERATING AS THE STELLAR GROUP
2800 WATLEY ROAD JACKSONVILLE, FL 32217 (904) 262-2900
WWW.STELLAR.NET

Snyder's Lance
FACILITY RENOVATIONS AND ADDITIONS
Hyannis, MA

EXTERIOR ELEVATIONS

© The Stellar Group 2016. Copyright, The Stellar Group 2016.
All rights reserved. No part of this work may be used, reproduced, distributed, displayed, or transmitted in any form or by any means, without the prior written consent of The Stellar Group, Inc.

REV	DATE	BY	DESCRIPTION
B	04/14/17	TSE	ISSUE FOR PERMIT
A	04/07/17	TSE	OWNER REVIEW

JOB NO: 73006001

DRAWN: Author

CHECKED: Checker

SCALE: 3/32" = 1'-0"

A3101

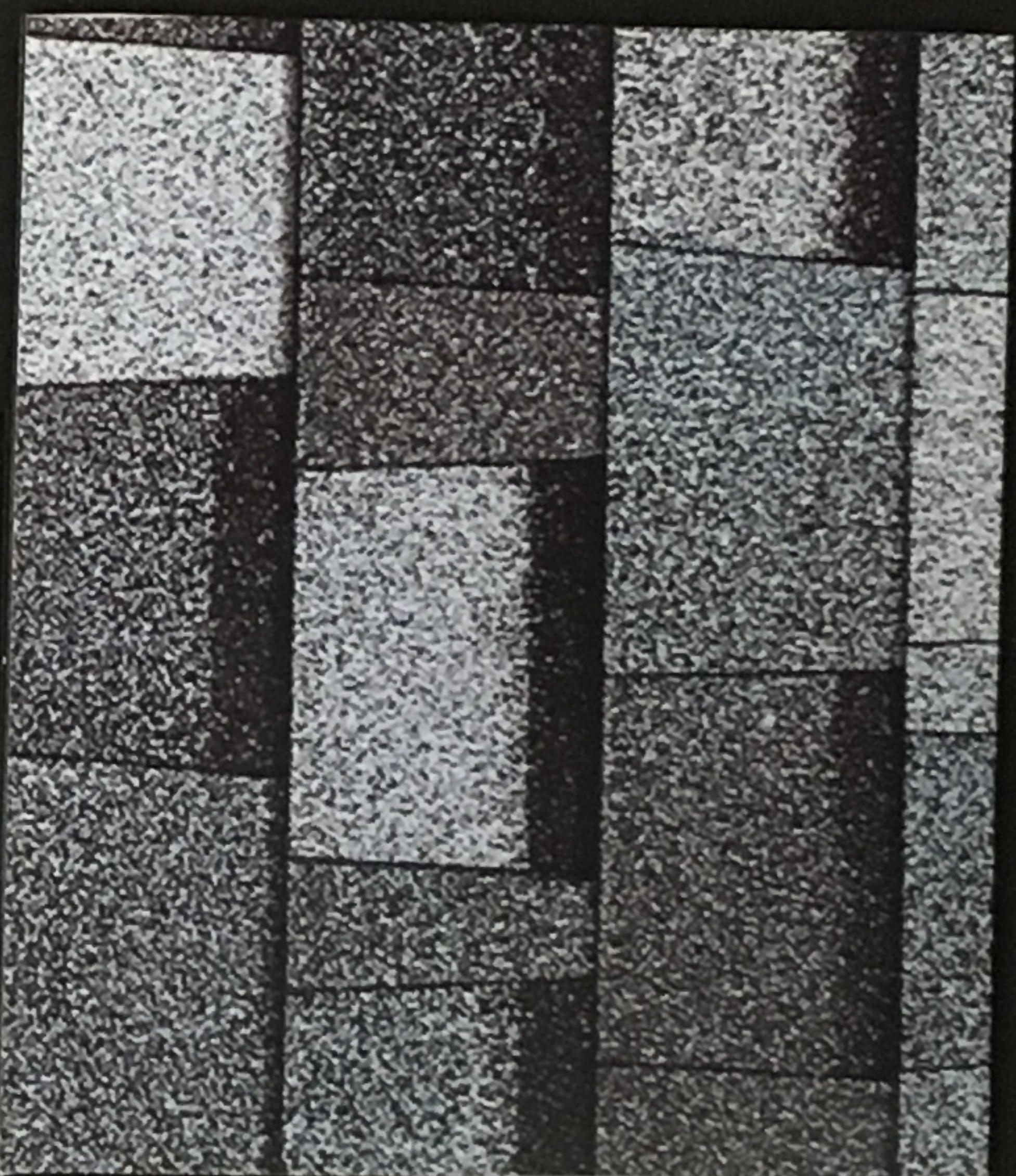
DRAWING NO.



E2-HARDIE SHINGLE (COLOR ONLY)



E1-HARDIE PLANK



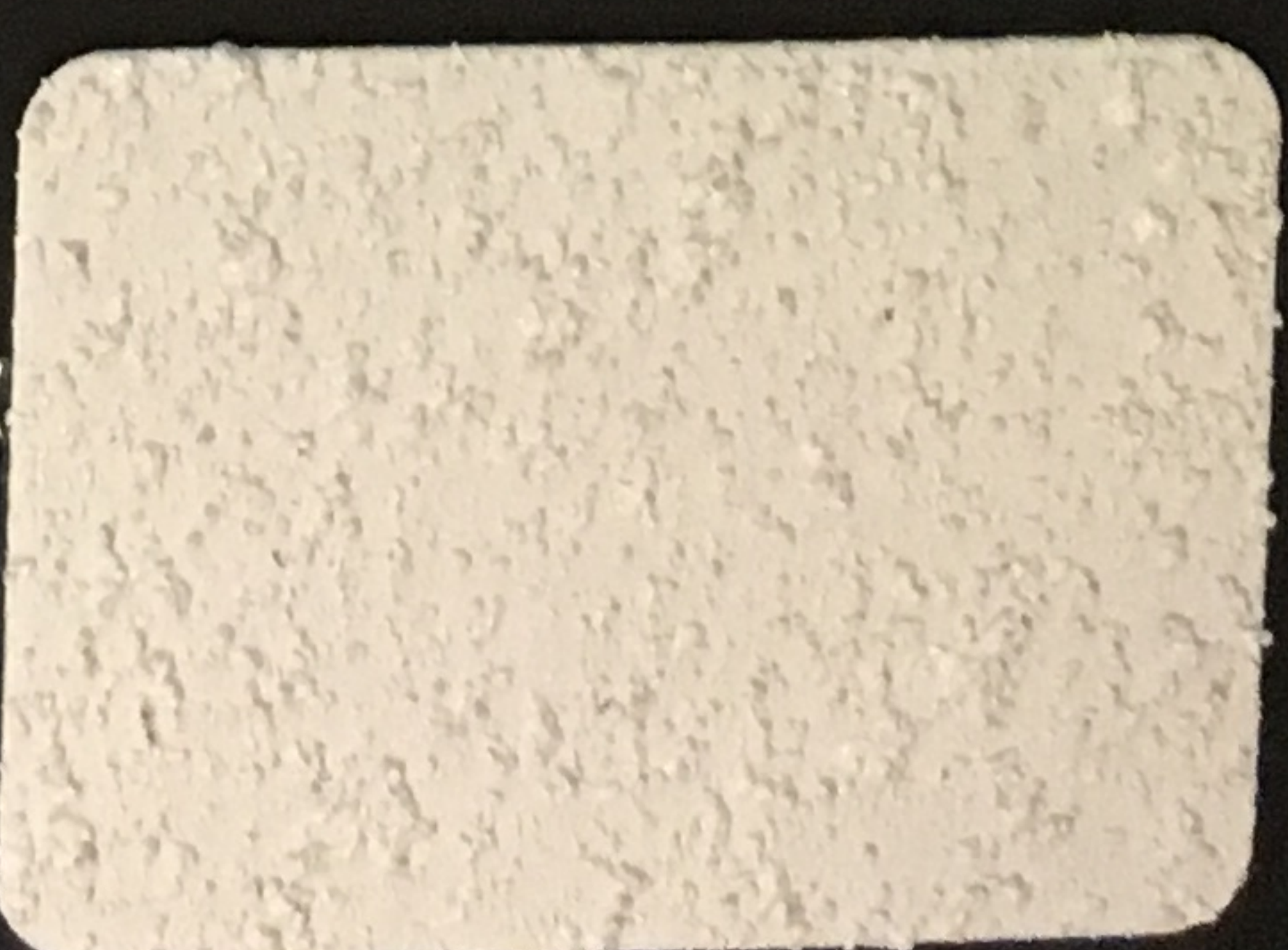
E10-SHINGLE ROOF LIGHTHOUSE



E9-SHINGLE ROOF VESTIBULES



E12-LIGHTHOUSE STUCCO COLOR MATCH



STUCCO-TEXTURE

E11-LIGHTHOUSE STUCCO COLOR MATCH



E6-ROTARY WINDOW

NORTHEAST
Product Catalog



Achieve authentic character and
UNCOMPROMISING PERFORMANCE.

 **JamesHardie**
Siding | Trim



It's time to
BUILD SOMETHING TIMELESS.



JamesHardie

Installed on over 5.5 million homes from coast to coast, James Hardie® fiber cement siding products are designed to resist the most extreme conditions while romancing the senses. Enjoy the warm, natural character of wood with unprecedented peace of mind. It's easy to see what makes James Hardie the market leader.

UNIQUE FORMULATION

We use the highest quality raw materials and proprietary additives for enhanced strength and moisture protection.

FINISHING TECHNOLOGY

Baked-on color delivers a beautiful finish that resists fading and makes a lasting impression.

COMPLETE EXTERIOR™

Offers homeowners an unrivaled collection of design options with exceptional warranties through a single, trusted manufacturer.

CONTENTS

4	HardieZone® System
6	Unique Formulation
8	Finishing Technology
10	100% HARDIE Complete Exterior™
12	HardiePlank® Lap Siding
14	HardiePanel® Vertical Siding
16	HardieShingle® Siding
18	HardieTrim® Boards
20	HardieSoffit® Panels
22	Color Inspiration
24	Color Selection
26	HardieWrap® Weather Barrier
27	Finishing Touches
28	The James Hardie Difference
30	Warranty and Endorsements

HardieZone® System

Only James Hardie fiber cement products are Engineered for Climate®. In the northern U.S. and Canada, HZ5® products resist shrinking, swelling and cracking even after years of wet or freezing conditions. HZ10® products help protect homes from hot, humid conditions, blistering sun and more.

With James Hardie siding and trim, homeowners have an exterior that's tougher than the elements and easy on the eyes.

NO MATTER WHAT NATURE BRINGS



HardieShingle®
7 in. Straight
Edge Panel
Timber Bark



HardieTrim®
5/4 x 3.5 in.
Timber Bark

HardiePlank®
6.25 in. Select
Cedarmill®
Khaki Brown

TOUGHER THAN THE ELEMENTS



Stands up to storms
and harsh weather



Water resistant
to protect against
swelling, warping
and cracking;
also resists
mold damage



Won't be eaten by
animals or insects



Fire resistant



Helps reduce time
and money spent on
maintenance

Resist the elements
WITH IRRESISTIBLE CHARM.

Unique Formulation

HZ5® Substrate

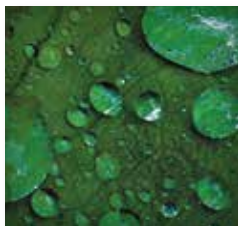
Not all fiber cement is the same. The James Hardie HZ5 product formulation contains the highest quality raw materials. Proprietary additives, combined with an innovative manufacturing process and product design, create a substrate specifically engineered to reduce water absorption and resist damage from wet or freezing conditions.

PROPRIETARY ENHANCEMENTS CREATE THE MOST DURABLE JAMES HARDIE® SIDING EVER MADE



Perfect balance of strength and workability

Our balance of high-quality Portland cement, sand and cellulose fiber delivers the best combination of strength and workability.



Enhanced moisture resistance for unmatched durability

Patented and proprietary additives are chemically bonded within the HZ5 substrate matrix to provide durable moisture resistance.



Increased dimensional stability

Our siding is engineered at the microscopic level to create a fiber cement composite with superior dimensional stability that helps protect against shrinking and splitting.



HZ5®

Integrity is ingrained
IN EVERYTHING WE DO.

HardieTrim®
5/4 x 5.5 in.
Arctic White

The advanced design of HZ5 lap siding improves drainage from top to bottom. In addition to our product formulation's enhanced moisture resistance, HardiePlank® HZ5 lap siding features a modified profile with a sloped top and bullnose drip edge for improved drainage over the entire outer face of the board.



Sloped Top

Positive slope at top drains moisture to outer face of lap



Profiled Drip Edge

Bottom bullnose drip edge allows moisture to drain away from lap

Finishing Technology

ColorPlus® Technology

Our advanced ColorPlus® Technology finishes deliver the ultimate in aesthetics and performance to your job site. Our products aren't simply painted at the factory. Multiple coats of color are baked onto the board, creating a vibrant, consistent finish for years of lasting character, adhesion and fade resistance.

GIVES HOMES A **BEAUTIFUL, CONSISTENT COATING** THAT PERFORMS BETTER, LASTS LONGER AND LOOKS BRIGHTER



Superior finish adhesion

Our proprietary coating is engineered for superior adhesion to our substrate and applied to all surfaces, edges and features for durable performance.



Superior color retention

Finish is cured onto boards after each coating step for a stronger bond, which allows for exceptional resistance to cracking, peeling and chipping.




Superior UV resistance

Multi-coat, baked-on finish retains its vibrancy longer when compared to vinyl siding and paint on other siding products in all UV conditions.



ColorPlus®
Technology



HardieShingle®
7 in. Staggered
Edge Panel
Iron Gray

HardieTrim®
5/4 x 3.5 in.
Arctic White

HardiePlank®
7.25 in. Select
Cedarmill®
Monterey Taupe

For timeless beauty
BEGIN WITH THE FINISH.

Our finishes help eliminate stress and reduce costly weather delays when it's too cold or damp to paint for extended periods. And there's no reason to question whether or not sub-optimal painting conditions will negatively affect your paint job. In fact, there's no longer any need to paint on site during installation.

ColorPlus Technology finishes are fully cured in a controlled environment and arrive on your job site ready for year-round installation.





**ColorPlus®
Technology**
Sandstone Beige

**HardieSoffit®
Panels**

HardiePlank®
Lap Siding

HardiePanel®
Vertical Siding &
HardieTrim®
Batten Boards

100% HARDIE Complete Exterior™

ColorPlus®
Technology
Monterey Taupe

HardieShingle®
Siding

HardieTrim®
Boards

Top to bottom, our exterior product line is defined by excellent performance, aesthetics and design options.

Provide protection from the elements, showcase a homeowner's individual style and install peace of mind with exceptional warranties through a single, trusted manufacturer.

Your homes mean everything
BUILD 100% HARDIE™

HardiePlank®

Sleek and strong, HardiePlank® lap siding is not just our best-selling product – it's the most popular brand of siding in America.

With a full spectrum of colors and textures, homeowners can enjoy protection from the elements and the versatility to make their dream home a reality. From Victorians to Colonials, HardiePlank lap siding sets the standard in exterior cladding.

HardieTrim®
5/4 x 3.5 in.
Arctic White

HardiePlank®
6.25 in. Smooth
Arctic White

A classic look for
THE HOME OF THEIR DREAMS.



SELECT CEDARMILL®

Khaki Brown

Thickness	5/16 in.			
Length	12 ft. planks			
Width	5.25 in.	6.25 in.	7.25 in.	8.25 in.
Exposure	4 in.	5 in.	6 in.	7 in.
ColorPlus Pcs./Pallet	324	280	252	210
Prime Pcs./Pallet	360	308	252	230
Pcs./Sq.	25.0	20.0	16.7	14.3



SMOOTH

Countrylane Red

Thickness	5/16 in.			
Length	12 ft. planks			
Width	5.25 in.	6.25 in.	7.25 in.	8.25 in.
Exposure	4 in.	5 in.	6 in.	7 in.
ColorPlus Pcs./Pallet	324	280	252	210
Prime Pcs./Pallet	360	308	252	230
Pcs./Sq.	25.0	20.0	16.7	14.3



BEADED CEDARMILL®*

Light Mist

Thickness	5/16 in.			
Length	12 ft. planks			
Width	8.25 in.			
Exposure	7 in.			
ColorPlus Pcs./Pallet	210			
Prime Pcs./Pallet	240			
Pcs./Sq.	14.3			



BEADED SMOOTH*

Heathered Moss

Thickness	5/16 in.			
Length	12 ft. planks			
Width	8.25 in.			
Exposure	7 in.			
ColorPlus Pcs./Pallet	210			
Prime Pcs./Pallet	240			
Pcs./Sq.	14.3			

*Beaded Cedarmill® and Beaded Smooth are available exclusively with ColorPlus Technology in Pittsburgh, Philadelphia and New England districts.

Products are available primed or with ColorPlus Technology finishes. For more details, visit jameshardie.com

HardiePanel®

HardiePanel® vertical siding delivers style and substance. When combined with HardieTrim® boards, it achieves the rustic board-and-batten look that defines cottage charm. The covered seams contribute to a well-insulated home.

Its crisp, clean lines make HardiePanel vertical siding a smart choice for strong, contemporary designs.



HardieTrim®
Batten Boards
Smooth

HardiePanel®
Smooth

True to the tradition of
PERFORMANCE AND BEAUTY.



SELECT CEDARMILL®

Navajo Beige

Thickness	5/16 in.		
Size	4 ft. x 8 ft.	4 ft. x 9 ft.*	4 ft. x 10 ft.
Pcs./Pallet	50	50	50
Pcs./Sq.	3.2	2.8	2.5



SMOOTH

Evening Blue

Thickness	5/16 in.		
Size	4 ft. x 8 ft.	4 ft. x 9 ft.*	4 ft. x 10 ft.
Pcs./Pallet	50	50	50
Pcs./Sq.	3.2	2.8	2.5



STUCCO

Navajo Beige

Thickness	5/16 in.		
Size	4 ft. x 8 ft.	4 ft. x 9 ft.*	4 ft. x 10 ft.
Pcs./Pallet	50	50	50
Pcs./Sq.	3.2	2.8	2.5



SIERRA 8

Not available with ColorPlus Technology

Thickness	5/16 in.		
Size	4 ft. x 8 ft.	4 ft. x 9 ft.*	4 ft. x 10 ft.
Pcs./Pallet	50	50	50
Pcs./Sq.	3.2	2.8	2.5

*4 ft. x 9 ft. HardiePanel vertical siding only available primed and exclusively in DC/Baltimore and Virginia districts.

Products are available primed or with ColorPlus Technology finishes. For more details, visit jameshardie.com

HardieShingle®

Restore the look of a grand Cape Cod or add distinction to a handsome bungalow. HardieShingle® siding embodies the enchanting look of cedar shingles with lower maintenance.

Better than the real thing, HardieShingle siding resists rotting, curling, warping and splitting.

HardieTrim®
4/4 x 7.25 in.
Arctic White

HardieShingle®
7 in. Straight
Edge Panel
Light Mist

Achieve the handcrafted
LOOK OF CEDAR.



STAGGERED EDGE PANEL

Sandstone Beige

Thickness	1/4 in.
Length	48 in.
Height	15.25 in.
Exposure	6 in.
Pcs./Pallet	100
Sq./Pallet	2
Pcs./Sq.	50



STRAIGHT EDGE PANEL*

Iron Gray

Thickness	1/4 in.	1/4 in.
Length	48 in.	48 in.
Height	14 in.	15.25 in.
Exposure	5 in.	7 in.
Pcs./Pallet	120	86
Sq./Pallet	2	2
Pcs./Sq.	60	43



HALF ROUNDS

Not available with ColorPlus Technology

Thickness	1/4 in.
Length	48 in.
Height	15.25 in.
Exposure	7 in.
Pcs./Pallet	86
Sq./Pallet	2
Pcs./Sq.	43



INDIVIDUAL SHINGLES*

Monterey Taupe

Thickness	1/4 in.
Length	3.5 in. 4.5 in. 5.5 in. 7 in. 8.75 in.
Height	14 in.
Exposure	5 in.
Pcs./Pallet	960
Sq./Pallet	2
Pcs./Sq.	480

INDIVIDUAL SHINGLES

Monterey Taupe

Thickness	1/4 in.
Length	4.2 in. 5.5 in. 6.75 in. 7.25 in. 10 in.
Height	15.25 in.
Exposure	7 in.
Pcs./Pallet	630
Sq./Pallet	2
Pcs./Sq.	315

*5 in. Straight Edge Panel and 5 in. Individual Shingles available exclusively with ColorPlus Technology and only in Philadelphia and New England districts.

Products are available primed or with ColorPlus Technology finishes. For more details, visit jameshardie.com

HardieTrim®

Form meets function at every angle with HardieTrim® boards. With an authentic look, HardieTrim boards provide design flexibility for columns, friezes, doors, windows and other accent areas.

Better than wood, it will complement your long-lasting, lower maintenance James Hardie siding – adding punctuation to your design statement.

HardieTrim®
5/4 x 3.5 in.
Khaki Brown

HardiePlank®
6.25 in. Smooth
Navajo Beige

The performance you require
THE DISTINCTIVENESS YOU DESIRE.

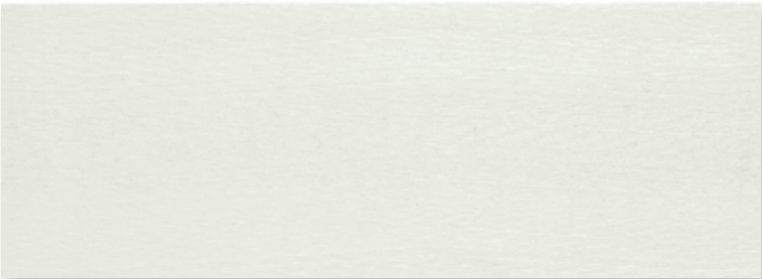
HARDIETRIM® BOARDS



4/4 NT3® SMOOTH

Arctic White

Thickness	.75 in.				
Length	12 ft. boards				
Width	3.5 in.	5.5 in.	7.25 in.	9.25 in.	11.25 in.
Pcs./Pallet	312	208	156	104	104



5/4 NT3® SMOOTH

Arctic White

Thickness	1 in.					
Length	12 ft. boards					
Width	3.5 in.	4.5 in.	5.5 in.	7.25 in.	9.25 in.	11.25 in.
Pcs./Pallet	240	200	160	120	80	80



CROWN MOULDING

Arctic White

Thickness	.75 in.	
Length	12 ft. boards	
Width	3.25 in.	5.25 in.
Pcs./Pallet	50	48

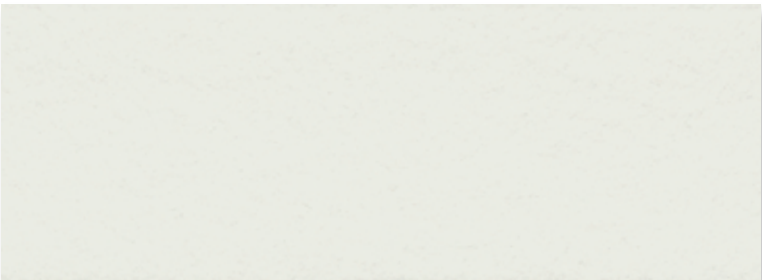
HARDIETRIM® BATTEN BOARDS



RUSTIC GRAIN®

Arctic White

Thickness	.75 in.
Length	12 ft. boards
Width	2.5 in.
Pcs./Pallet	437



SMOOTH

Arctic White

Thickness	.75 in.
Length	12 ft. boards
Width	2.5 in.
Pcs./Pallet	437

HardieTrim Boards are available primed or with ColorPlus Technology in DC/Baltimore and Virginia districts. For other districts, HardieTrim Boards are exclusively available with ColorPlus Technology. HardieTrim Batten Boards are available primed or with ColorPlus Technology. HardieTrim Crown Mouldings are available exclusively in ColorPlus Technology.

A home is only as strong as its weakest point. HardieSoffit® panels reinforce your work by protecting the vulnerable gap between eaves and exterior walls.

Available in vented, non-vented and a range of pre-cut sizes, these panels complete your design and help protect it from moisture and pests.

VENTILATION BENEFITS

Using vented soffit improves ventilation in the attic space and reduces the chance of water vapor condensation that can lead to issues such as mold and mildew growth, stained ceilings and damage to the framing of the house.

In warm climates, HardieSoffit panels allow hot, humid air to escape, which not only helps prevent condensation in the attic, but can also help reduce air conditioning costs.

In cool climates, HardieSoffit panels help prevent condensation from forming on the interior side of the roof sheathing and reduce the chances of roof-damaging ice dams.

HardieSoffit®
16 in. Vented
Smooth
Arctic White

For complete confidence
EVERY DETAIL MATTERS.



VENTED SMOOTH & CEDARMILL[®]*

Sail Cloth

Thickness	1/4 in.		
Length	12 ft.	12 ft.	8 ft.
Width	12 in.	16 in.	24 in.
ColorPlus Pcs./Pallet	216	156	108
Prime Pcs./Pallet	200	150	100



NON-VENTED SMOOTH & CEDARMILL[®]*

Sail Cloth

Thickness	1/4 in.			
Length	12 ft.	12 ft.	8 ft.	8 ft.**
Width	12 in.	16 in.	24 in.	48 in.
ColorPlus Pcs./Pallet	216	156	108	
Prime Pcs./Pallet	200	150	100	50



BEADED PORCH PANEL

Available exclusively in Arctic White

Thickness	1/4 in.
Length	8 ft.
Width	48 in.
Pcs./Pallet	50

Using the proper amount of vented HardieSoffit panels is crucial to a building's ventilation performance. James Hardie has taken the guess work out of soffit ventilation by providing the table below illustrating the minimum amount of vented HardieSoffit panels recommended for your attic space.***

ATTIC SQ. FT.	LINEAR FT. OF VENTED SOFFIT
200	10
300	14
400	19
500	24
600	29
700	34
800	38
900	43
1000	48
1100	53
1200	58
1300	62
1400	67
1500	72
1600	77
1700	82
1800	86
1900	91
2000	96
2100	101
2200	106
2300	110
2400	115
2500	120
2600	125
2700	130
2800	134
2900	139
3000	144
3100	149

*Vented Cedarmill[®] and Non-Vented Cedarmill[®] are available exclusively with ColorPlus Technology in Philadelphia and New England districts.

**These 48 in. x 8 ft. panels only available primed.

***Linear Feet of Vented Soffit calculation is based on 2012 International Residential Code (IRC) Section 806.2, Exception 2, with a 50% upper attic and 50% lower attic split of required ventilation, using soffit with a net free ventilation of 5 square inches per linear foot. This Exception is also approved in 2015 IRC Section 806.2. Always consult a building design professional to confirm attic ventilation meets local building code requirements.



Cast your homes in
THE MOST ROMANTIC LIGHT.

Khaki Brown

Cobble Stone

Timber Bark

SUBTLE BLENDS

Color Inspiration

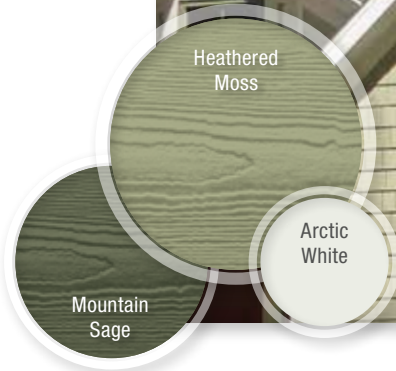


COOL TONES

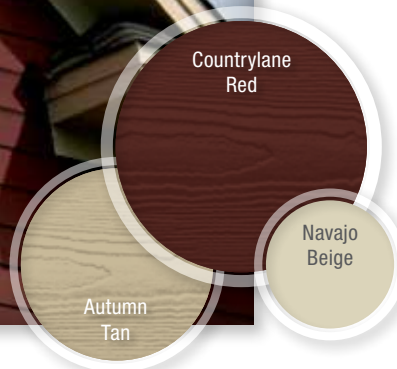


Use deeper body colors for a warm, welcoming feeling. Make homes appear larger with soft contrasts between siding and trim. The right color combinations leave lasting impressions. Our color specialists designed the rich ColorPlus finish collection to help you express what's special about every home you build.

COMPLEMENTARY



WARM TONES

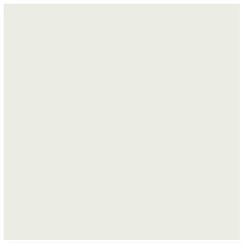


Express the true nature of a home's character with ColorPlus® Technology

PLANK, PANEL, BATTEN AND SHINGLE COLORS

				
ARCTIC WHITE	NAVAJO BEIGE	COBBLE STONE	PEARL GRAY	LIGHT MIST
				
SAIL CLOTH	SANDSTONE BEIGE	MONTEREY TAUPE	GRAY SLATE	BOOTHBAY BLUE
				
WOODLAND CREAM	AUTUMN TAN	WOODSTOCK BROWN	AGED PEWTER	EVENING BLUE
				
HEATHERED MOSS	KHAKI BROWN	TIMBER BARK	NIGHT GRAY	IRON GRAY
				
MOUNTAIN SAGE	CHESTNUT BROWN	COUNTRYLANE RED	RICH ESPRESSO	DEEP OCEAN

TRIM AND SOFFIT COLORS



ARCTIC WHITE



NAVAJO BEIGE



COBBLE STONE



SAIL CLOTH



SANDSTONE BEIGE



MONTEREY TAUPE



AUTUMN TAN



WOODSTOCK BROWN



KHAKI BROWN



TIMBER BARK

Explore our color palettes and differentiate your homes with stunning curb appeal. These distinctive tones are drawn from natural environments, complementing your design with the look of America's idyllic neighborhoods.



Selecting a color? Request a product sample at [jameshardie.com/samples](https://www.jameshardie.com/samples)

Colors shown are as accurate as printing methods will permit. Please see actual product sample for true color.

No exterior cladding can prevent 100% of water intrusion. Your homes should have an additional line of defense. HardieWrap® weather barrier provides a superior balance of water resistance and breathability, keeping the area within the wall drier. This helps prevent moisture accumulation that may lead to mold and mildew growth.

INSTALLATION ADVANTAGES

- Thicker, more durable material for easier, quicker installation
- Superior tear resistance helps prevent water infiltration
- Can be installed with staples in place of cap nails for cost savings
- Provides a higher level of performance, no matter what type of cladding you specify



We've got performance covered
FROM THE INSIDE OUT.



WEATHER BARRIER

Thickness	11 mil.			
Length	100 ft.	100 ft.	150 ft.	150 ft.
Width	3 ft.	9 ft.	9 ft.	10 ft.

PRO-FLASHING

Thickness	20 mil.		
Length	75 ft.	75 ft.	75 ft.
Width	4 in.	6 in.	9 in.

FLEX FLASHING

Thickness	60 mil.	
Length	75 ft.	75 ft.
Width	6 in.	9 in.

SEAM TAPE

Thickness	3 mil.
Length	165 ft.
Width	1-7/8 in.



To learn more about our weather barrier's advantages, visit hardiewrap.com

Finishing Touches

ColorPlus Technology Accessories

TOUCH-UP KITS

Specially formulated to match ColorPlus Technology finishes, our Touch-up Kits offer resistance to aging, color change and chalking. Included in the kits, Touch-up Pens conceal nailheads and very small nicks and scratches.



COLOR-MATCHED CAULK

OSI® QUAD® MAX sealant offers a durable, lower maintenance sealant solution to color match James Hardie ColorPlus products.



Trim Accessories

FLAT TABS

Reduce nail holes and improve the aesthetic of trim applications around windows, doors and band boards.

CORNER TABS

Use corner tabs to reduce the appearance of nail holes that would detract from the finished look of corner trim installations.



Find useful job-site tips in our industry-leading Best Practices Guide. For the latest installation instructions, visit hardieinstallation.com



HardieTrim®
5/4 x 3.5 in.
Arctic White

HardiePlank®
7.25 in. Select
Cedarmill®
Timber Bark

As unforgettable
AS IT IS UNCOMPROMISING.



See the James Hardie Difference



James Hardie invented fiber cement. Over 5.5 million installations later, we continue to set the standard in premium, high-performance exterior cladding. Our products deliver uncompromising durability and finish quality for a beautiful, lower maintenance exterior.

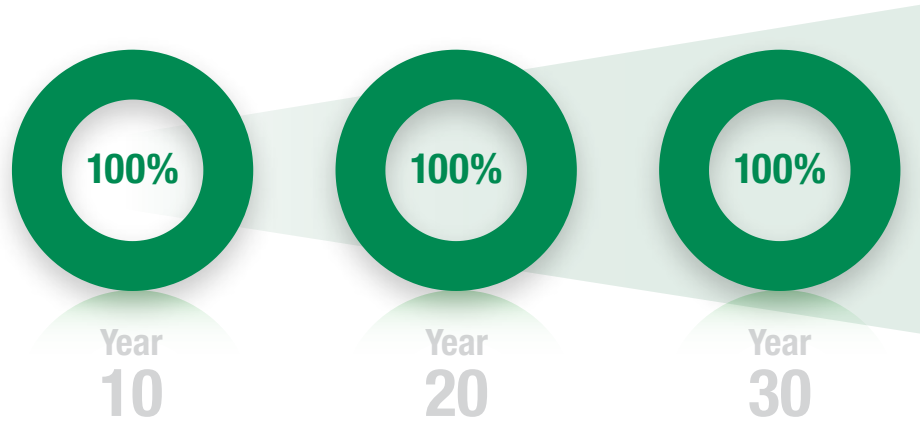
Our unrivaled investment in R&D and constant innovations in product design, manufacturing and distribution allow us to remain steps ahead of the competition. With the support of our people, partners and exceptional warranties, we're committed to protecting your customers' homes while helping your business grow.

Warranty

Protect your home with North America's #1 brand of siding backed by exceptional warranties. Unlike other brands, James Hardie doesn't prorate our siding warranty coverage. We stand behind our siding 100% for 30 years.

ColorPlus Technology finishes and HardieTrim boards come with 15-year limited warranties.

James Hardie Non-Prorated Siding Warranty Coverage



Endorsements – a reputation built on trust

For decades, our fiber cement products have been used to create better places to live. Each new home stands as a testament to our uncompromising quality. That proven track record has earned the loyalty of millions of homeowners and the endorsements of trusted authorities across the building industry.*



Chosen by builders as a **Brand Leader** in **Builder Magazine** since 2009



Featured on the **DIY Network's Blog Cabin** since 2012



#1 Return on Investment every year since 2005 in **Remodeling Magazine****



HardiePlank lap siding is backed by the **Good Housekeeping Seal**

*Endorsements are accurate as of 2015.

**Remodeling magazines' 'Cost vs. Value Report' states that re-siding a home with fiber cement siding provides the #1 return on investment for projects in the 'upscale' category.




HardiePlank®
8.25 in.
Select Cedarmill®
Countrylane Red

HardieTrim®
5/4 x 5.5 in.
Arctic White

Make every home
AN EXPRESSION OF YOUR CHARACTER.



1.888.542.7343 | jameshardie.com

© 2015 James Hardie Building Products Inc. All Rights Reserved. TM, SM, and ® denote trademarks or registered trademarks of James Hardie Technology Limited. The , HZ5, HZ10 and ColorPlus Technology logos are registered trademarks of James Hardie Technology Limited. OSI and QUAD are registered symbols of Henkel Corporation. HS15158 08/15



JamesHardie

Siding | Trim