

Jeffrey Ribeiro

From: Kelly Durfee Cardoza <kdc@avaloncon.com>
Sent: Friday, January 13, 2017 4:16 PM
To: Jeffrey Ribeiro
Subject: The Cape Club_ golf cart storage clarification 1 13 17
Attachments: 20170113152908212.pdf; Site Plan-Landscape 2-29-16 with H&M added golf cart paths.pdf

Hi Jeffrey,
Here is a clarification regarding the lower level golf cart storage.

Cottages 7, 8 and 9 have a single foundation. Cottage 7 has a lower level garage door (on the left side as you face it) and will have a paved cart path to access the existing paved roadway. Cottage 8 has no lower level garage doors. Cottage 9 has a lower level garage door (on the right side as you face it). The architect is sending a new back elevation for this area and I will forward on Monday. Cottage 10 does not have a basement level.

The attached SK shows the revised site plan and landscape plan for this area. My scan shows the paved cart path from 7 and 9 in yellow (the location comes from the garage doors). The changes in the plantings are also shown on the scan in red. There are 2 less fountain grasses (PAK) and one less Japanese holly (IC).

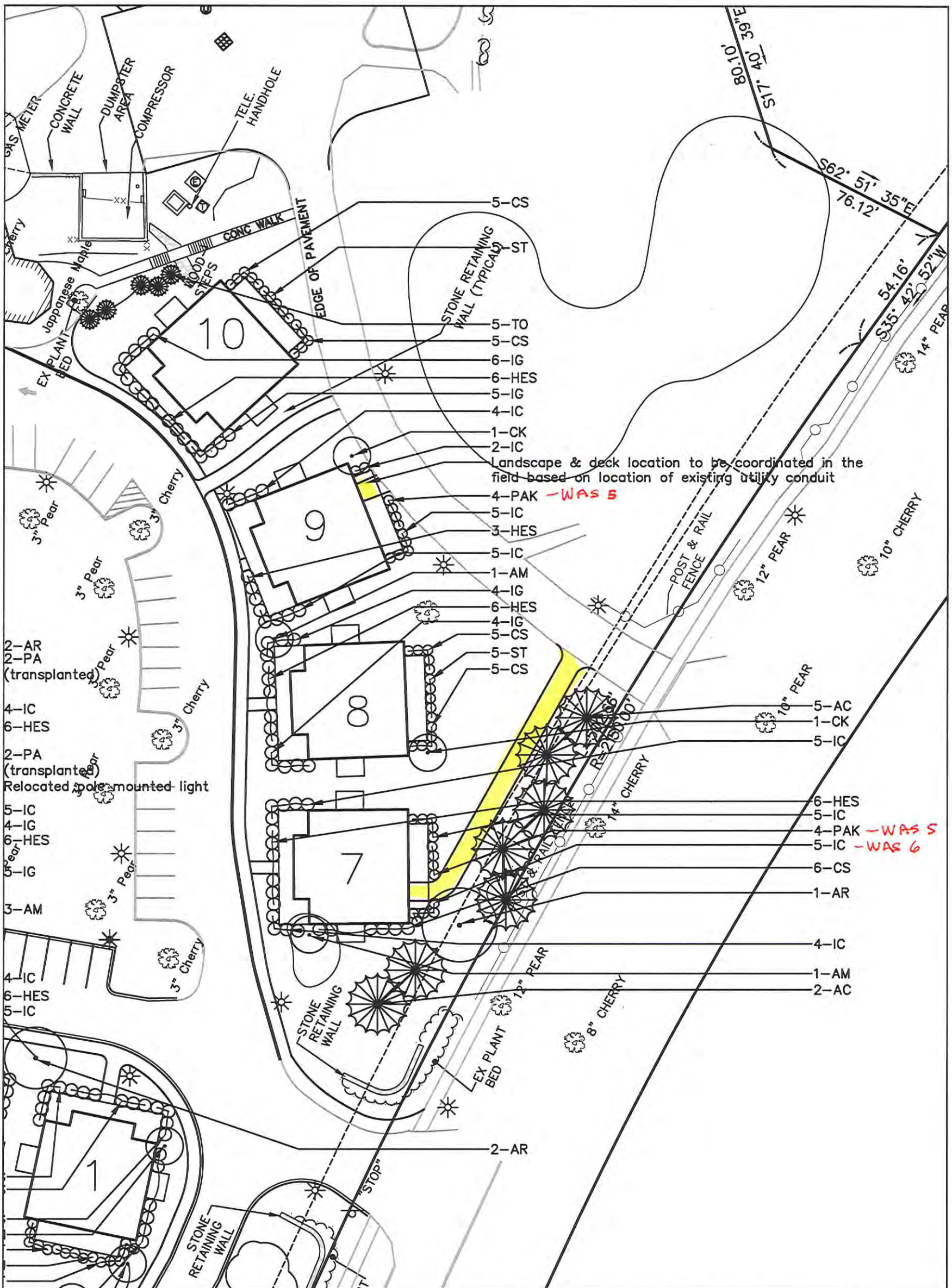
Do you want a fully revised landscape sheet or is the SK adequate?

Please let me know if we should do a call to discuss.

Regards,
Kelly

Kelly Durfee Cardoza, Principal
Avalon Consulting Group, LLC
41 Cals Court, Taunton, MA 02780
Cell Phone: 508.942.2174
Office Phone: 508.880.2905 Fax: 508.880.2745 SDO-Certified WBE

Any review, transmission, re-transmission, dissemination or other use of, or taking of any action in reliance upon this information by persons or entities other than the intended recipient is prohibited. If you received this in error, please contactkdc@avaloncon.com and delete the material from any computer.



**SK-C01: GOLF COTTAGE LAYOUT DETAIL PLAN
FOR PRELIMINARY SITE PLAN**

JAN. 12, 2017

WATER WORKS, GRADING & DRAINAGE PLAN
PREPARED FOR

THE CAPE CLUB
125 FALMOUTH WOODS ROAD
IN
HATCHVILLE, FALMOUTH, MA

Kae 1/13/17



BACK ELEVATION

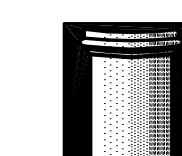
SCALE: 3/8" = 1'-0"

Bldg. 7

Cape Club - Golf Cottage

Falmouth, MA

January 16, 2017



The MZO GROUP
DESIGNERS ■ ARCHITECTS ■ PLANNERS
IN THE *MIQUELLE* TRADITION

92 Montvale Avenue, Suite 4350 ■ Stoneham, Massachusetts 02180
Voice 781-279-4446 ■ Fax 781-279-4448 ■ E-Mail: mzo@mzogroup.com ■ www.mzogroup.com

© COPYRIGHT 2017 - MZO ARCHITECTURAL GROUP, INC. OWNS THE COPYRIGHT IN THIS DOCUMENT.
NO REPRODUCTION OR OTHER USE IS ALLOWED WITHOUT THE EXPRESS WRITTEN CONSENT OF MZO ARCHITECTURAL GROUP, INC.



BACK ELEVATION

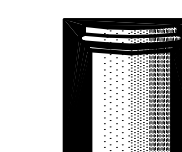
SCALE: 3/8" = 1'-0"

Bldg. 8

Cape Club - Golf Cottage

Falmouth, MA

January 16, 2017



The MZO GROUP
DESIGNERS ■ ARCHITECTS ■ PLANNERS
IN THE *MIQUELLE* TRADITION

92 Montvale Avenue, Suite 4350 ■ Stoneham, Massachusetts 02180
Voice 781-279-4446 ■ Fax 781-279-4448 ■ E-Mail: mzo@mzogroup.com ■ www.mzogroup.com

© COPYRIGHT 2017 - MZO ARCHITECTURAL GROUP, INC. OWNS THE COPYRIGHT IN THIS DOCUMENT. NO REPRODUCTION OR OTHER USE IS ALLOWED WITHOUT THE EXPRESS WRITTEN CONSENT OF MZO ARCHITECTURAL GROUP, INC.



BACK ELEVATION

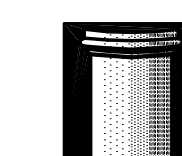
SCALE: 3/8" = 1'-0"

Bldg. 9

Cape Club - Golf Cottage

Falmouth, MA

January 16, 2017



The MZO GROUP
DESIGNERS ■ ARCHITECTS ■ PLANNERS
IN THE *MIQUELLE* TRADITION

92 Montvale Avenue, Suite 4350 ■ Stoneham, Massachusetts 02180
Voice 781-279-4446 ■ Fax 781-279-4448 ■ E-Mail: mzo@mzogroup.com ■ www.mzogroup.com

© COPYRIGHT 2017 - MZO ARCHITECTURAL GROUP, INC. OWNS THE COPYRIGHT IN THIS DOCUMENT.
NO REPRODUCTION OR OTHER USE IS ALLOWED WITHOUT THE EXPRESS WRITTEN CONSENT OF MZO ARCHITECTURAL GROUP, INC.

Jeffrey Ribeiro

From: Kelly Durfee Cardoza <kdc@avaloncon.com>
Sent: Tuesday, January 17, 2017 3:20 PM
To: Jeffrey Ribeiro
Cc: Donna Andrade
Subject: FW: Bldgs 7, 8 and 9 Basement Plan
Attachments: PLOT-GOLF-COTTAGE-BASEMENT.PDF

Hi Jeffrey,

Attached is the basement plan for the cottages – note that the patios between the cottages are shown for reference. Holmes and McGrath will issue a new grading plan that is consistent with this plan.

Thanks for all your help!

Kelly

Kelly Durfee Cardoza, Principal

Avalon Consulting Group, LLC

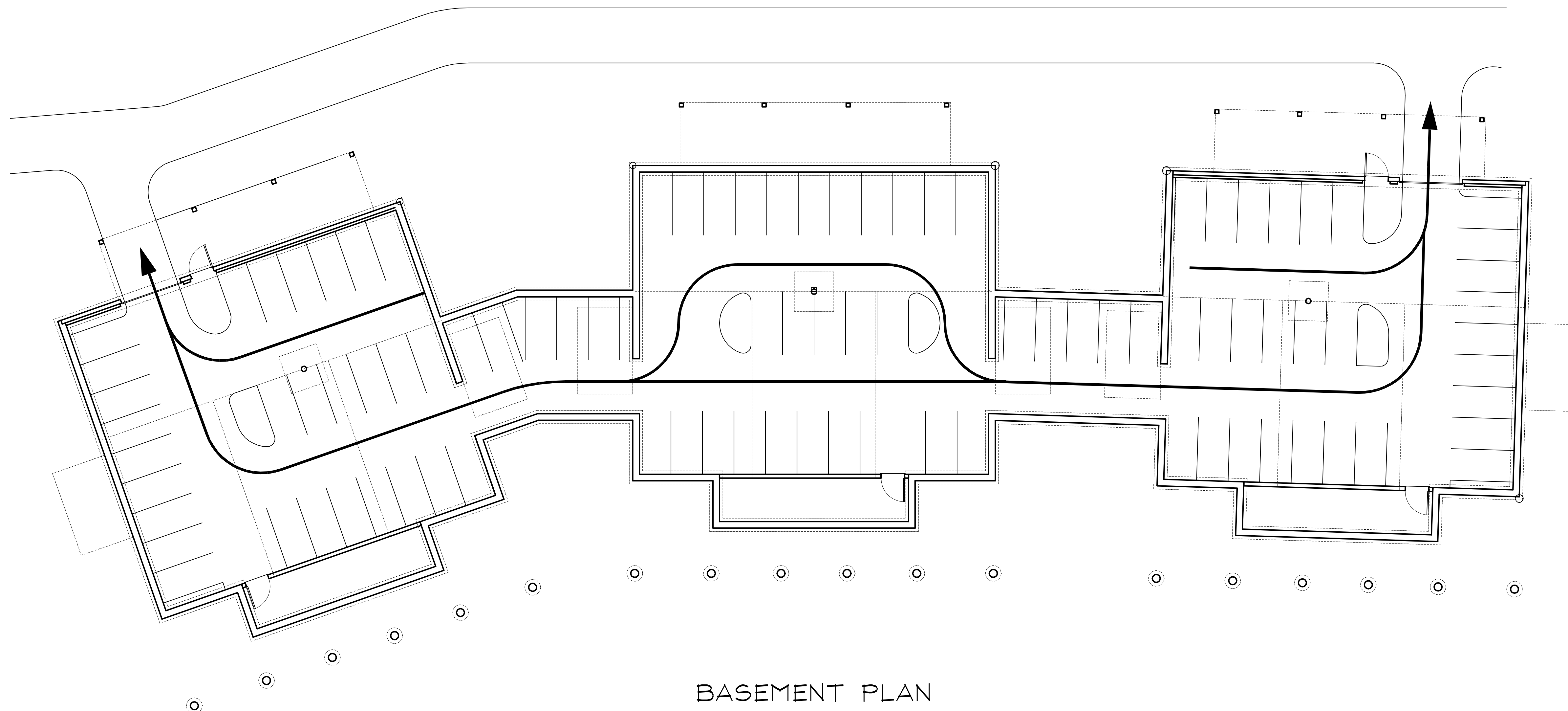
41 Cals Court, Taunton, MA 02780

Cell Phone: 508.942.2174

Office Phone: 508.880.2905 Fax: 508.880.2745

SDO-Certified WBE

Any review, transmission, re-transmission, dissemination or other use of, or taking of any action in reliance upon this information by persons or entities other than the intended recipient is prohibited. If you received this in error, please contact kdc@avaloncon.com and delete the material from any computer.



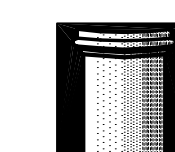
BASEMENT PLAN

1/8" = 1'-0"

Cape Club - Golf Cottage

Falmouth, MA

01-17-17



The MZO GROUP
 DESIGNERS ■ ARCHITECTS ■ PLANNERS
 IN THE *MIQUELLE* TRADITION

92 Montvale Avenue, Suite 4350 ■ Stoneham, Massachusetts 02180
 Voice 781-279-4446 ■ Fax 781-279-4448 ■ E-Mail: mzo@mzogroup.com ■ www.mzogroup.com

© COPYRIGHT 2015, MZO ARCHITECTURAL GROUP, INC. OWNS THE COPYRIGHT IN THIS DOCUMENT. NO REPRODUCTION OR OTHER USE IS ALLOWED WITHOUT THE EXPRESS WRITTEN CONSENT OF MZO ARCHITECTURAL GROUP, INC.