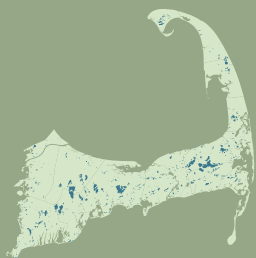


Sandwich Ponds Profile

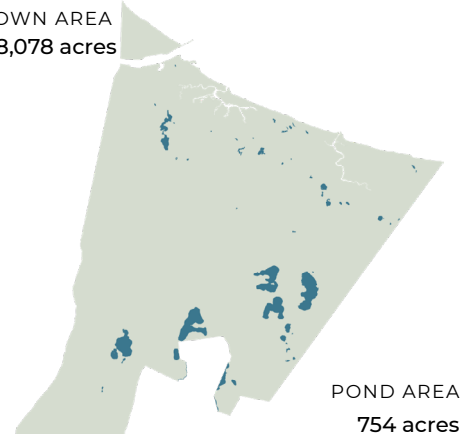
A RESOURCE OF THE CAPE COD FRESHWATER INITIATIVE



Water quality is critical to the vitality of the region's pond ecosystems and coastal embayments. Yet pollutants found in stormwater runoff, and in groundwater by which ponds are recharged, threaten the region's freshwater quality. Understanding the broad issues that impact Cape Cod's freshwater ponds, characteristics of the region's ponds, and actions at the local level all help set a baseline for understanding and action.

Sandwich

TOWN AREA
28,078 acres



POND AREA
754 acres

3% of total town area is comprised of freshwater ponds and lakes

55
PONDS

11
10+ Acre
Ponds

18
Named
Ponds

14
Average
Pond Size
ACRES

29
Average
Pond Depth
FEET

4
Fish Stocked
Ponds

17
Ponds Adjacent to
Cranberry Bogs

3
Ponds that Cross
Town Boundaries

7
Ponds with
Public Access

6
State Listed
Great Ponds

13%
Impervious Surfaces
in Pond 300ft Buffer

5
Ponds with Coastal
Plain Pondshores

20
Ponds with Rare
Species Habitat

Pond Monitoring

Of the town's 55 ponds, 0 have three consecutive years of recent monitoring data and only 11% of all the ponds have available monitoring data. The data record for this monitoring spans 11 years with an average of 0.6 sampling events at each monitored pond per year.

6
Ponds Monitored

0
Ponds with 3 Consecutive
Years of Recent Data
(2016-2021)

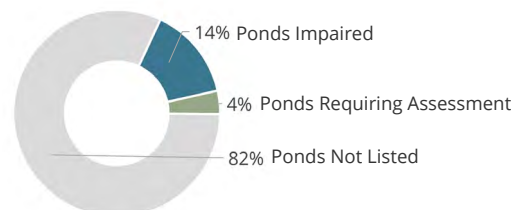
Water Quality Impairments

A lack of consistent and available monitoring data for all ponds means that we may be underestimating threats to waterbody health.

4
Harmful Algal Bloom
Advisories Since 2017
(DPH Reported)

10
Ponds listed on MassDEP's Draft
2022 Integrated List of Waters

2
Freshwater Bathing
Beaches with Sampling
Failures for Fecal Coliform
in 2022



Top 5 Largest Ponds

POND	AREA
1. Mashpee-Wakeby Pond	735.9 acres
2. Lawrence Pond	138.6 acres
3. Peters Pond	135.0 acres
4. Spectacle Pond	106.2 acres
5. Snake Pond	87.5 acres

Top 5 Deepest Ponds

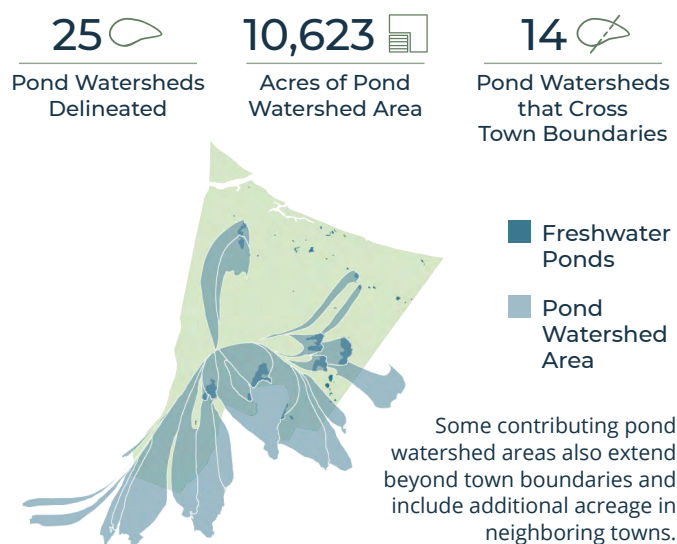
POND	DEPTH
1. Peters Pond	57 ft.
2. Spectacle Pond	43 ft.
3. Hoxies Pond	37 ft.
4. Snake Pond	33 ft.
5. Triangle Pond	30 ft.

Sandwich Ponds Profile

A RESOURCE OF THE CAPE COD FRESHWATER INITIATIVE

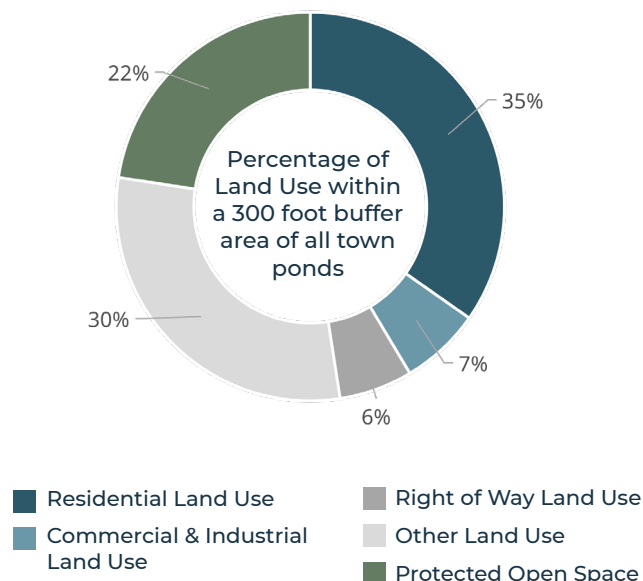
Pond Watersheds

The land area that contributes to freshwater ponds and lakes is referred to as a pond watershed. Relatively few pond watersheds have been delineated across the Cape. Land area within pond watersheds is much larger than the water bodies themselves. In Sandwich, **38%** of the town's total land area is within a delineated pond watershed.



Land Use in Pond Buffer Area

Understanding the way that land is used around our freshwater ponds contributes to a better understanding of potential pond impacts, stressors, and viable strategies to protect or restore pond health. **1,239** acres (or 4%) of the town's total land area is within 300 feet of a freshwater pond.



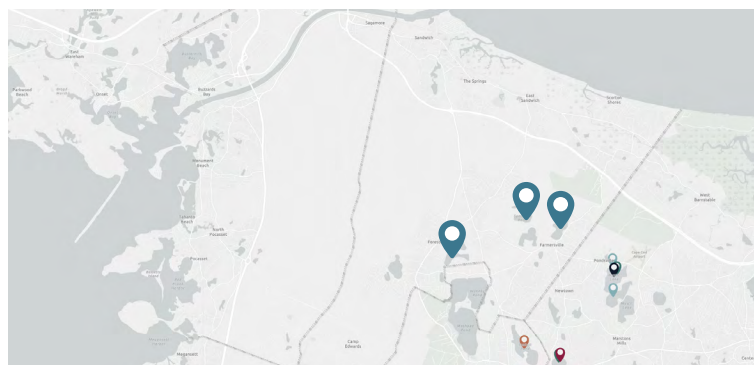
Documented Town Reports and Actions



Local Pond Organizations

Independent groups, organizing around a single or multiple ponds, voluntarily conduct educational and advocacy efforts and collect water quality monitoring data, which is not always available or sufficient for regional analysis.

Friends of Peters Pond
Shawme Ponds Watershed Association



Pond Strategies Implemented

Updates and additional projects will be added as information becomes available. Review project details at: cccom.link/pond-restoration-projects

- Lawrence Pond, District of Critical Planning Concern
- Spectacle Pond, District of Critical Planning Concern
- Triangle Pond, District of Critical Planning Concern
- Peters Pond, Use Restrictions