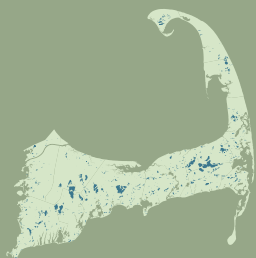


Harwich Ponds Profile

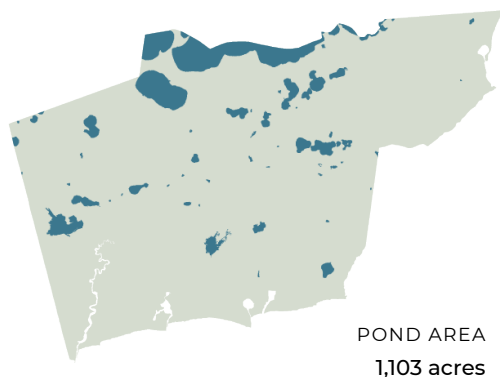
A RESOURCE OF THE CAPE COD FRESHWATER INITIATIVE



Water quality is critical to the vitality of the region's pond ecosystems and coastal embayments. Yet pollutants found in stormwater runoff, and in groundwater by which ponds are recharged, threaten the region's freshwater quality. Understanding the broad issues that impact Cape Cod's freshwater ponds, characteristics of the region's ponds, and actions at the local level all help set a baseline for understanding and action.

Harwich

TOWN AREA
14,442 acres



POND AREA
1,103 acres

8% of total town area is comprised of freshwater ponds and lakes

Top 5 Largest Ponds

POND	AREA
1. Long Pond	742.9 acres
2. Seymour Pond	183.4 acres
3. Hinckleys Pond	174.8 acres
4. West Reservoir	72.8 acres
5. Walkers Pond	36.2 acres

Top 5 Deepest Ponds

POND	DEPTH
1. Long Pond	70 ft.
2. Josephs Pond	55 ft.
3. Seymour Pond	38 ft.
4. Skinequit Pond	32 ft.
5. Hinckleys Pond	28 ft.

62
PONDS

27
10+ Acre
Ponds

36
Named
Ponds

12
ACRES
Average
Pond Size

20
FEET
Average
Pond Depth

0
Fish Stocked
Ponds

13
Ponds Adjacent to
Cranberry Bogs

12
Ponds that Cross
Town Boundaries

7
Ponds with
Public Access

21
State Listed
Great Ponds

13%
Impervious Surfaces
in Pond 300ft Buffer

6
Ponds with Coastal
Plain Pondshores

38
Ponds with Rare
Species Habitat

Pond Monitoring

Of the town's 62 ponds, only 6 have three consecutive years of recent monitoring data and only 24% of all the ponds have available monitoring data. The data record for this monitoring spans 19 years with an average of 1 sampling event at each monitored pond per year.

15
Ponds Monitored

6
Ponds with 3 Consecutive
Years of Recent Data
(2016-2021)

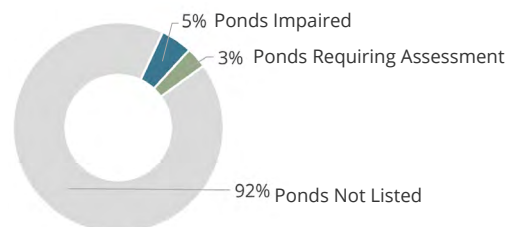
Water Quality Impairments

A lack of consistent and available monitoring data for all ponds means that we may be underestimating threats to waterbody health.

0
Harmful Algal Bloom
Advisories Since 2017
(DPH Reported)

5
Ponds listed on MassDEP's Draft
2022 Integrated List of Waters

1
Freshwater Bathing
Beaches with Sampling
Failures for Fecal Coliform
in 2022

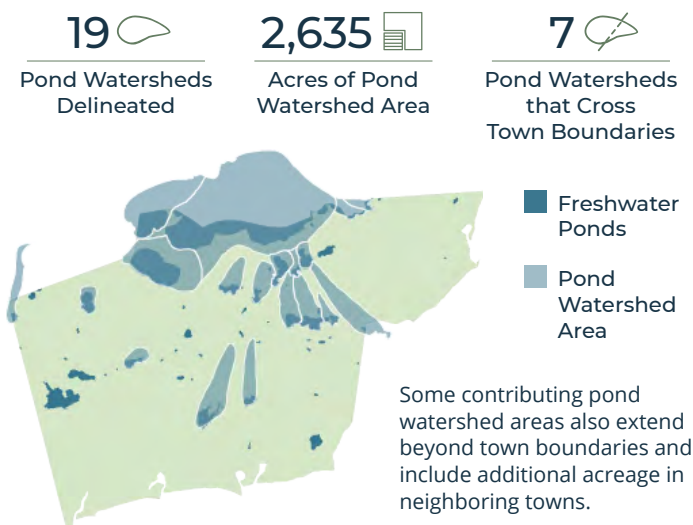


Harwich Ponds Profile

A RESOURCE OF THE CAPE COD FRESHWATER INITIATIVE

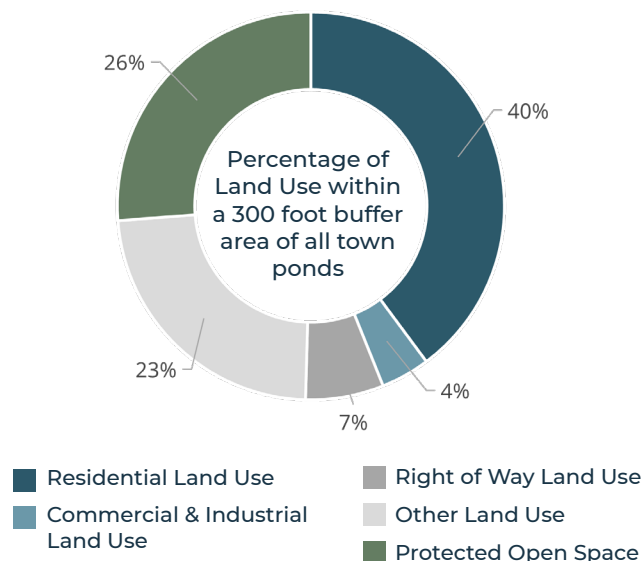
Pond Watersheds

The land area that contributes to freshwater ponds and lakes is referred to as a pond watershed. Relatively few pond watersheds have been delineated across the Cape. Land area within pond watersheds is much larger than the water bodies themselves. In Harwich, **18%** of the town's total land area is within a delineated pond watershed.



Land Use in Pond Buffer Area

Understanding the way that land is used around our freshwater ponds contributes to a better understanding of potential pond impacts, stressors, and viable strategies to protect or restore pond health. **1,341** acres (or **9%**) of the town's total land area is within 300 feet of a freshwater pond.



Documented Town Reports and Actions

1 

Town Specific Freshwater Reports

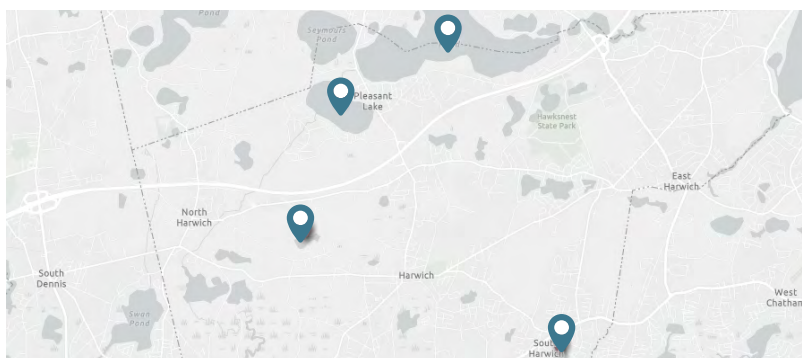
6 

Pond Specific Freshwater Reports

Local Pond Organizations

Independent groups, organizing around a single or multiple ponds, voluntarily conduct educational and advocacy efforts and collect water quality monitoring data, which is not always available or sufficient for regional analysis.

Hinckleys Pond Association
Watershed Association of South Harwich
Great Sand Lakes Association



Pond Strategies Implemented

Updates and additional projects will be added as information becomes available. Review project details at: cccom.link/pond-restoration-projects

- 📍 Aunt Edies Pond, DCPC*
- 📍 Cornelius Pond, DCPC
- 📍 Walkers Pond, DCPC
- 📍 Black Pond, DCPC
- 📍 Olivers Pond, DCPC
- 📍 Hawksnest Pond, DCPC
- 📍 Flax Pond, Circulation
- 📍 Saquatucket Harbor Watershed, Cold Brook Preserve Wetland Restoration
- 📍 Skinequit Pond, Circulation
- 📍 Hinckley's Pond, Alum Treatment
- 📍 Flax Pond, Floating Wetland
- 📍 Pleasant Bay Watershed, Watershed Permit

*District of Critical Planning Concern (DCPC)