

# Barnstable County Ponds Profile

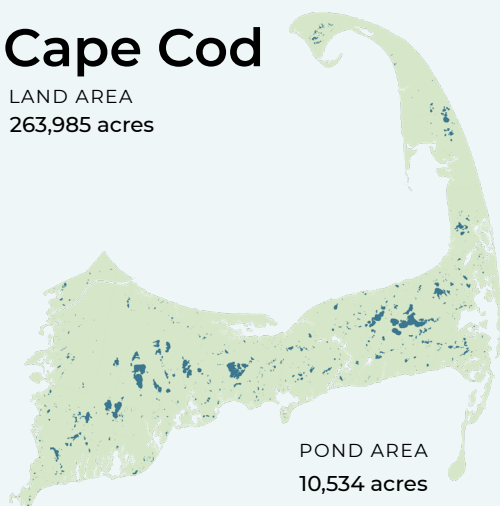
A RESOURCE OF THE CAPE COD FRESHWATER INITIATIVE



Water quality is critical to the vitality of the region's pond ecosystems and coastal embayments. Yet pollutants found in stormwater runoff, and in groundwater by which ponds are recharged, threaten the region's freshwater quality. Understanding the broad issues that impact Cape Cod's freshwater ponds, characteristics of the region's ponds, and actions at the local level all help set a baseline for understanding and action.

## Cape Cod

LAND AREA  
263,985 acres



POND AREA  
10,534 acres

4% of total regional area is comprised of freshwater ponds and lakes

890  
PONDS

171  
10+ Acre  
Ponds

395  
Named  
Ponds

12 ACRES  
Average  
Pond Size

24 FEET  
Average  
Pond Depth

27 Fish Stocked  
Ponds

107 Ponds Adjacent to  
Cranberry Bogs

22 Ponds that Cross  
Town Boundaries

96 Ponds with  
Public Access

122 State Listed  
Great Ponds

14% Impervious Surfaces  
in Pond 300ft Buffer

63 Ponds with Coastal  
Plain Pondshores

388 Ponds with Rare  
Species Habitat

## Pond Monitoring

Of the region's 890 ponds, only 61 have three consecutive years of recent monitoring data and only 24% of all the ponds have available monitoring data. The data record for this monitoring spans 20 years with an average of 1 sampling event every other year at each monitored pond.

218 Ponds Monitored

61 Ponds with 3 Consecutive  
Years of Recent Data  
(2016-2021)

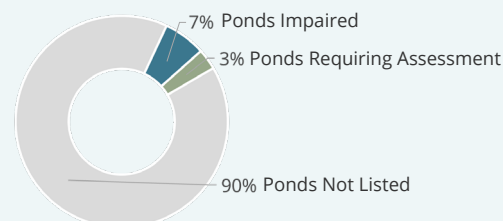
## Water Quality Impairments

A lack of consistent and available monitoring data for all ponds means that we may be underestimating threats to waterbody health.

25 Harmful Algal Bloom  
Advisories Since 2017  
(DPH Reported)

88 Ponds listed on MassDEP's Draft  
2022 Integrated List of Waters

25 Freshwater Bathing  
Beaches with Sampling  
Failures for Fecal Coliform  
in 2022



## Top 5 Largest Ponds

POND	AREA
1. Long Pond (Brewster)	742.9 acres
2. Mashpee-Wakeby Pond	735.9 acres
3. Wequaquet Lake	673.1 acres
4. Johns Pond	336.7 acres
5. Upper Mill Pond	260.1 acres

## Top 5 Deepest Ponds

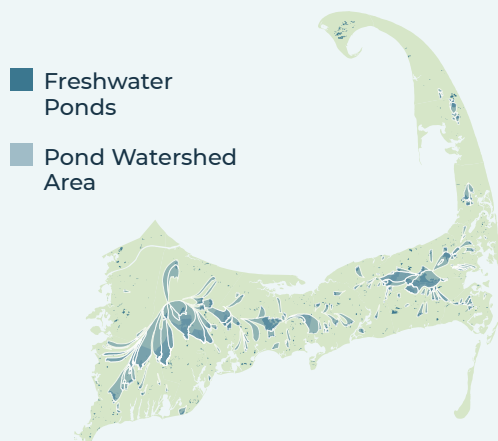
POND	DEPTH
1. Cliff Pond	88 ft.
2. Ashumet Pond	84 ft.
3. Flax Pond	75 ft.
4. Long Pond (Brewster)	70 ft.
5. Higgins Pond	66 ft.

# Barnstable County Ponds Profile

A RESOURCE OF THE CAPE COD FRESHWATER INITIATIVE

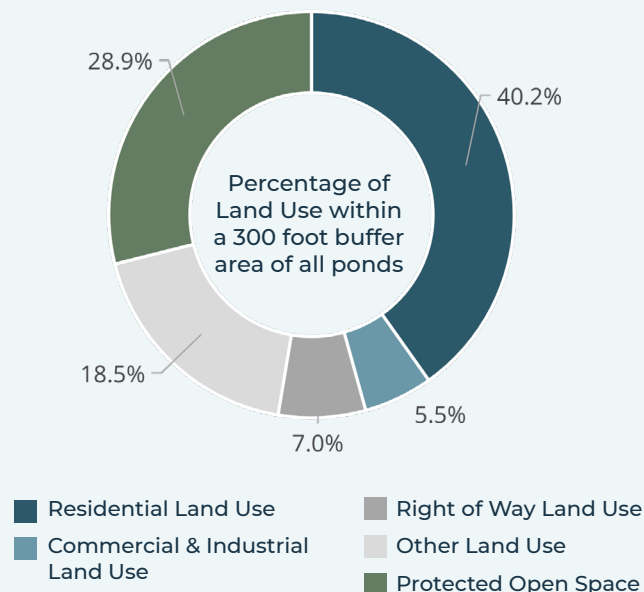
## Pond Watersheds

The land area that contributes to freshwater ponds and lakes is referred to as a pond watershed. Relatively few pond watersheds have been delineated across the Cape. Land area within pond watersheds is much larger than the water bodies themselves. On Cape Cod, **17%** of the region's total land area is within a delineated pond watershed.



## Land Use in Pond Buffer Area

Understanding the way that land is used around our freshwater ponds contributes to a better understanding of potential pond impacts, stressors, and viable strategies to protect or restore pond health. **17,681** acres (or **7%**) of the region's total land area is within 300 feet of a freshwater pond.

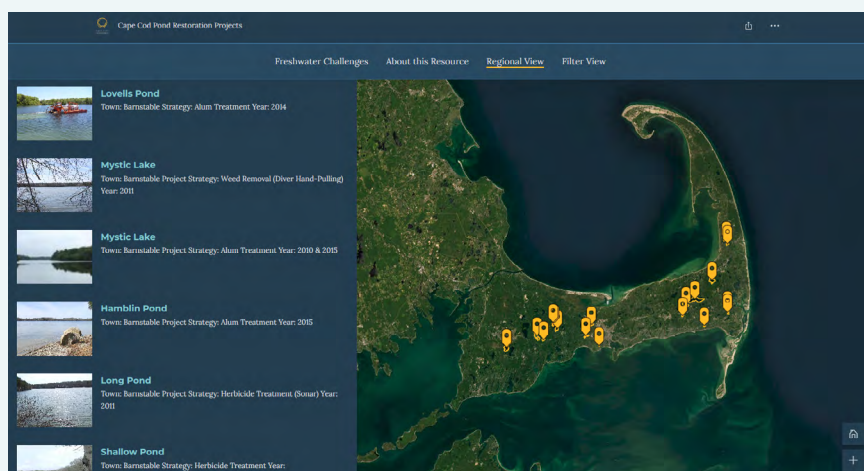


## Documented Town Reports and Actions



## Local Pond Organizations

Independent groups, organizing around a single or multiple ponds, voluntarily conduct educational and advocacy efforts and collect water quality monitoring data, which is not always available or sufficient for regional analysis.



## Pond Strategies Implemented

Updates and additional projects will be added as information becomes available. Review project details at: [cocom.link/pond-restoration-projects](https://cocom.link/pond-restoration-projects)

