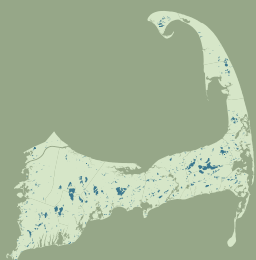


Brewster Ponds Profile

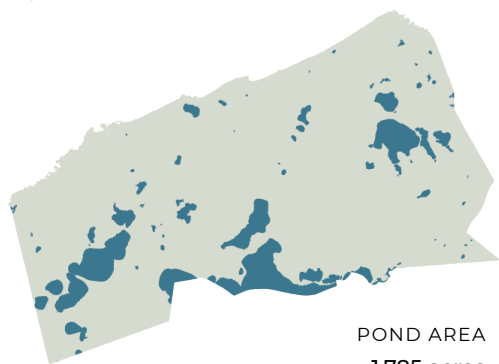
A RESOURCE OF THE CAPE COD FRESHWATER INITIATIVE



Water quality is critical to the vitality of the region's pond ecosystems and coastal embayments. Yet pollutants found in stormwater runoff, and in groundwater by which ponds are recharged, threaten the region's freshwater quality. Understanding the broad issues that impact Cape Cod's freshwater ponds, characteristics of the region's ponds, and actions at the local level all help set a baseline for understanding and action.

Brewster

TOWN AREA
16,261 acres



POND AREA
1,785 acres

11% of total town area is comprised of freshwater ponds and lakes

82 PONDS	27 10+ Acre Ponds	51 Named Ponds	30 ACRES Average Pond Size	32 FEET Average Pond Depth
--------------------	-----------------------------	--------------------------	--------------------------------------	--------------------------------------

6

Fish Stocked Ponds

10

Ponds Adjacent to Cranberry Bogs

13

Ponds that Cross Town Boundaries

11

Ponds with Public Access

24

State Listed Great Ponds

8%

Impervious Surfaces in Pond 300ft Buffer

17

Ponds with Coastal Plain Pondshores

60

Ponds with Rare Species Habitat

Top 5 Largest Ponds

POND	AREA
1. Long Pond	742.9 acres
2. Upper Mill Pond	260.1 acres
3. Cliff Pond	205.2 acres
4. Seymour Pond	183.4 acres
5. Hinckleys Pond	174.8 acres

Top 5 Deepest Ponds

POND	DEPTH
1. Cliff Pond	88 ft.
2. Flax Pond	75 ft.
3. Long Pond	70 ft.
4. Higgins Pond	66 ft.
5. Sheep Pond	63 ft.

Water Quality Impairments

A lack of consistent and available monitoring data for all ponds means that we may be underestimating threats to waterbody health.

8

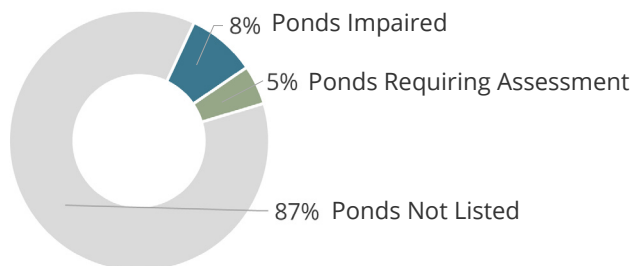
Harmful Algal Bloom Advisories Issued by EPA Since 2017

3

Freshwater Bathing Beaches with Sampling Failures for Fecal Coliform in 2022

11

Ponds listed on MassDEP's Draft 2022 Integrated List of Waters

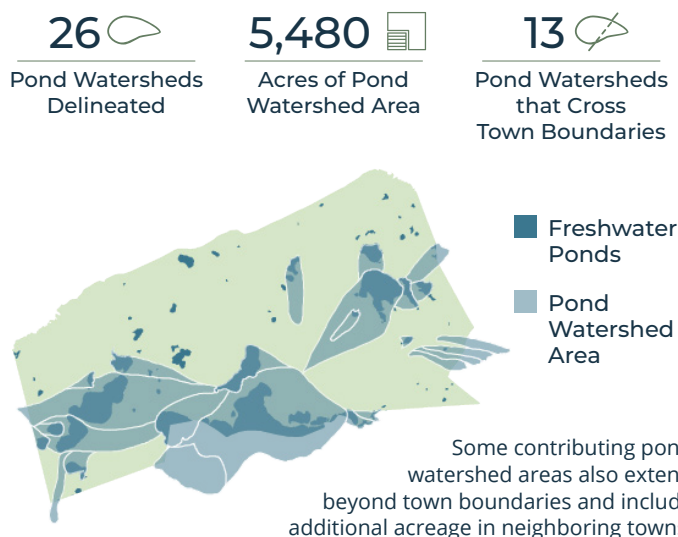


Brewster Ponds Profile

A RESOURCE OF THE CAPE COD FRESHWATER INITIATIVE

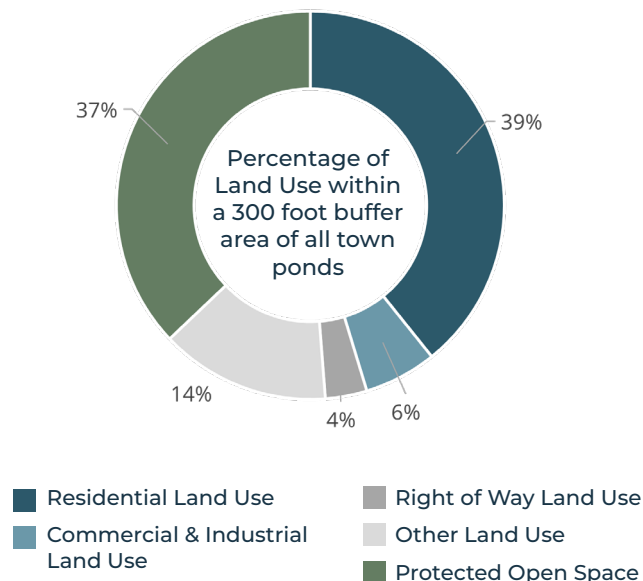
Pond Watersheds

The land area that contributes to freshwater ponds and lakes is referred to as a pond watershed. Relatively few pond watersheds have been delineated across the Cape. Land area within pond watersheds is much larger than the water bodies themselves. In Brewster, **34%** of the town's total land area is within a delineated pond watershed.



Land Use in Pond Buffer Area

Understanding the way that land is used around our freshwater ponds contributes to a better understanding of potential pond impacts, stressors, and viable strategies to protect or restore pond health. **1,803** acres (or **11%**) of the town's total land area is within 300 feet of a freshwater pond.



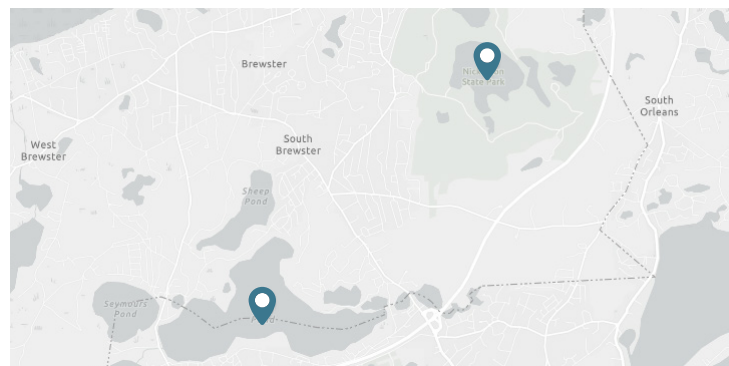
Documented Town Reports and Actions



Local Pond Organizations

Independent groups, organizing around a single or multiple ponds, voluntarily conduct educational and advocacy efforts and collect water quality monitoring data, which is not always available or sufficient for regional analysis.

- Brewster Ponds Coalition
- Friends of Elbow Pond



Pond Strategies Implemented

Updates and additional projects will be added as information becomes available. Review project details at: ccom.link/pond-restoration-projects

- Cliff Pond, Alum Treatment
- Long Pond, Alum Treatment