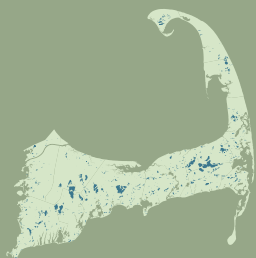


Bourne Ponds Profile

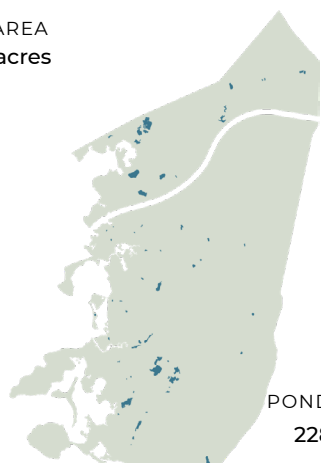
A RESOURCE OF THE CAPE COD FRESHWATER INITIATIVE



Water quality is critical to the vitality of the region's pond ecosystems and coastal embayments. Yet pollutants found in stormwater runoff, and in groundwater by which ponds are recharged, threaten the region's freshwater quality. Understanding the broad issues that impact Cape Cod's freshwater ponds, characteristics of the region's ponds, and actions at the local level all help set a baseline for understanding and action.

Bourne

TOWN AREA
26,456 acres



POND AREA
228 acres

1% of total town area is comprised of freshwater ponds and lakes

63
PONDS

6
10+ Acre
Ponds

31
Named
Ponds

4 ACRES
Average
Pond Size

9 FEET
Average
Pond Depth

0
Fish Stocked
Ponds

11
Ponds Adjacent to
Cranberry Bogs

0
Ponds that Cross
Town Boundaries

4
Ponds with
Public Access

0
State Listed
Great Ponds

11%
Impervious Surfaces
in Pond 300ft Buffer

0
Ponds with Coastal
Plain Pondshores

28
Ponds with Rare
Species Habitat

Top 5 Largest Ponds

POND	AREA
1. Flax Pond	22.8 acres
2. Goat Pasture Pond	22.6 acres
3. Queen Sewell Pond	18.0 acres
4. Red Brook Pond	17.5 acres
5. Bourne Pond	10.9 acres

Top 5 Deepest Ponds

POND	DEPTH
1. Queen Sewell Pond	28 ft.
2. Nightingale Pond	11 ft.
3. Red Brook Pond	10 ft.
4. Edmunds Pond	8 ft.
5. Flax Pond	6 ft.

Pond Monitoring

Of the town's **63** ponds, **0** have three consecutive years of recent monitoring data and only **8%** of all the ponds have available monitoring data. The data record for this monitoring spans **7** years with an average of **0.6** sampling events at each monitored pond per year.

5
Ponds Monitored

0
Ponds with 3 Consecutive
Years of Recent Data
(2016-2021)

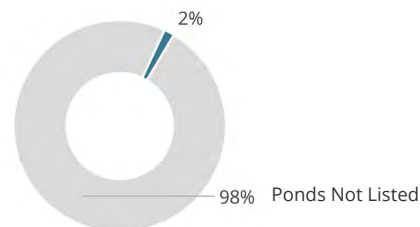
Water Quality Impairments

A lack of consistent and available monitoring data for all ponds means that we may be underestimating threats to waterbody health.

1 Harmful Algal Bloom
Advisories Since 2017
(DPH Reported)

1 Pond listed on MassDEP's Draft
2022 Integrated List of Waters

2 Freshwater Bathing
Beaches with Sampling
Failures for Fecal Coliform
in 2022



Bourne Ponds Profile

A RESOURCE OF THE CAPE COD FRESHWATER INITIATIVE

Pond Watersheds

The land area that contributes to freshwater ponds and lakes is referred to as a pond watershed. Relatively few pond watersheds have been delineated across the Cape. Land area within pond watersheds is much larger than the water bodies themselves. In Bourne, **1%** of the town's total land area is within a delineated pond watershed.

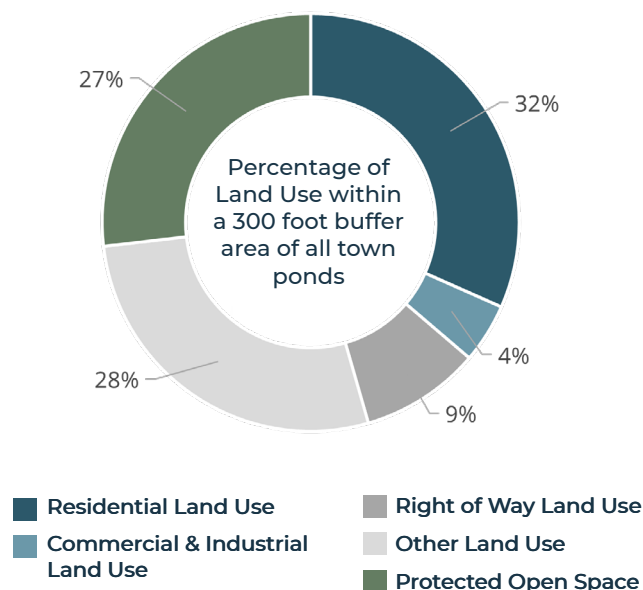


Freshwater Ponds
Pond Watershed Area

Some contributing pond watershed areas also extend beyond town boundaries and include additional acreage in neighboring towns.

Land Use in Pond Buffer Area

Understanding the way that land is used around our freshwater ponds contributes to a better understanding of potential pond impacts, stressors, and viable strategies to protect or restore pond health. **1,081** acres (or **4%**) of the town's total land area is within 300 feet of a freshwater pond.



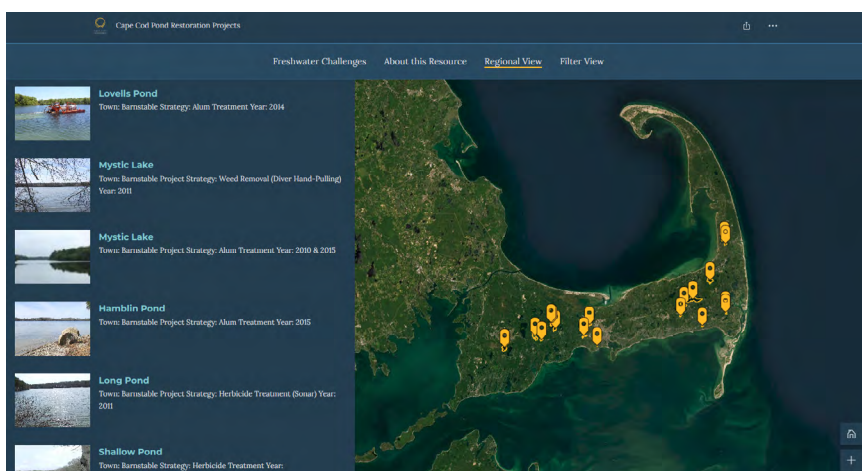
Documented Town Reports and Actions

There are **0** town or pond specific freshwater reports in the regional dataset.

Local Pond Organizations

Independent groups, organizing around a single or multiple ponds, voluntarily conduct educational and advocacy efforts and collect water quality monitoring data, which is not always available or sufficient for regional analysis.

There are **0** local pond organizations in the regional dataset.



Pond Strategies Implemented

Updates and additional projects will be added as information becomes available. Review project details at: cccom.link/pond-restoration-projects

There are **0** implemented pond strategies in the regional dataset.