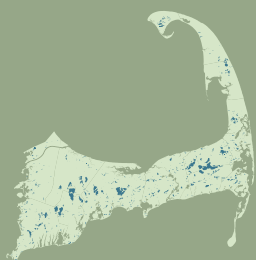


Barnstable Ponds Profile

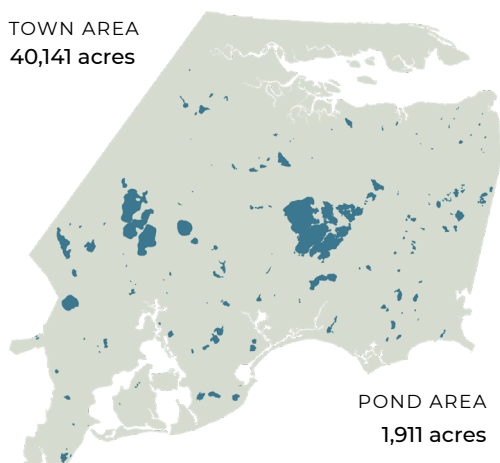
A RESOURCE OF THE CAPE COD FRESHWATER INITIATIVE



Water quality is critical to the vitality of the region's pond ecosystems and coastal embayments. Yet pollutants found in stormwater runoff, and in groundwater by which ponds are recharged, threaten the region's freshwater quality. Understanding the broad issues that impact Cape Cod's freshwater ponds, characteristics of the region's ponds, and actions at the local level all help set a baseline for understanding and action.

Barnstable

TOWN AREA
40,141 acres



POND AREA
1,911 acres

5% of total town area is comprised of freshwater ponds and lakes

162
PONDS

26
10+ Acre
Ponds

64
Named
Ponds

12 ACRES
Average
Pond Size

25 FEET
Average
Pond Depth

4 Fish Stocked
Ponds

18 Ponds Adjacent to
Cranberry Bogs

1 Ponds that Cross
Town Boundaries

24 Ponds with
Public Access

12 State Listed
Great Ponds

15% Impervious Surfaces
in Pond 300ft Buffer

7 Ponds with Coastal
Plain Pondshores

46 Ponds with Rare
Species Habitat

Pond Monitoring

Of the town's **162** ponds, **31** have three consecutive years of recent monitoring data and only **24%** of all the ponds have available monitoring data. The data record for this monitoring spans **20** years with an average of **0.5** sampling events at each monitored pond per year.

39 Ponds Monitored

31 Ponds with 3 Consecutive
Years of Recent Data
(2016-2021)

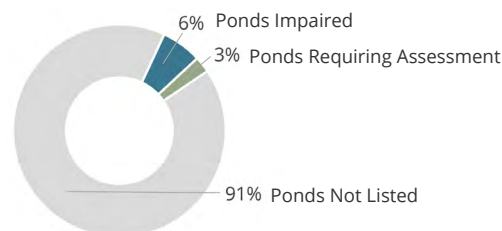
Water Quality Impairments

A lack of consistent and available monitoring data for all ponds means that we may be underestimating threats to waterbody health.

16 Harmful Algal Bloom
Advisories Since 2017
(DPH Reported)

14 Ponds listed on MassDEP's Draft
2022 Integrated List of Waters

7 Freshwater Bathing
Beaches with Sampling
Failures for Fecal Coliform
in 2022



Top 5 Largest Ponds

POND	AREA
1. Wequaquet Lake	673.1 acres
2. Mystic Lake	151.3 acres
3. Hamblin Pond	118.6 acres
4. Middle Pond	110.1 acres
5. Shallow Pond	81.0 acres

Top 5 Deepest Ponds

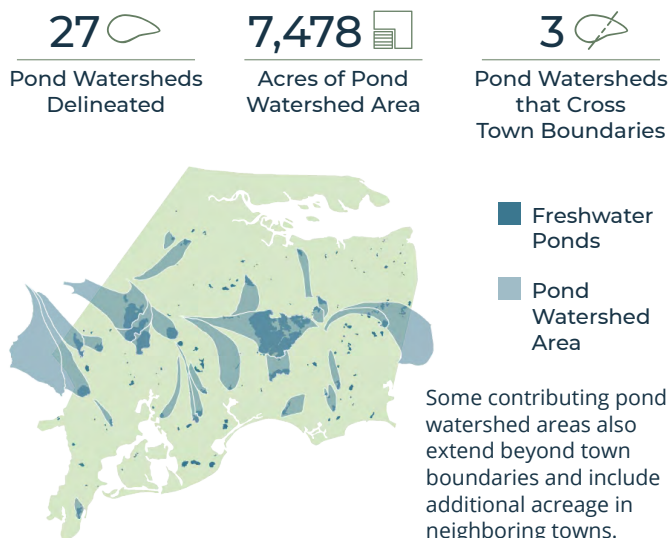
POND	DEPTH
1. Hamblin Pond	62 ft.
2. Shubael Pond	41 ft.
3. Micah Pond	41 ft.
4. Mystic Lake	40 ft.
5. Lovells Pond	37 ft.

Barnstable Ponds Profile

A RESOURCE OF THE CAPE COD FRESHWATER INITIATIVE

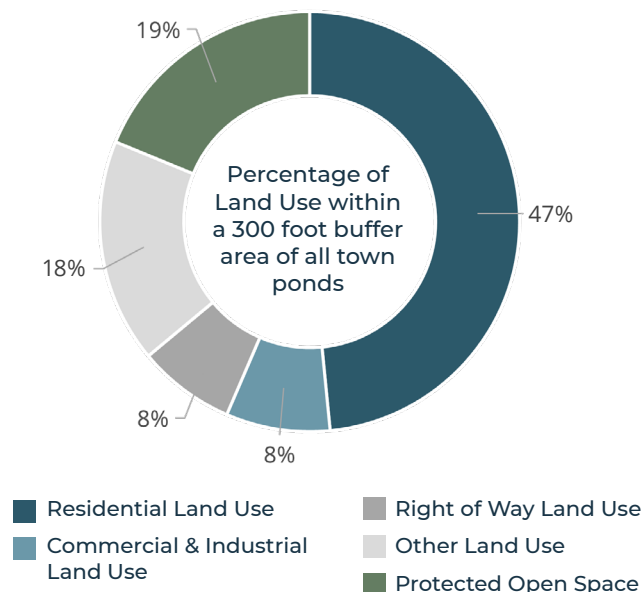
Pond Watersheds

The land area that contributes to freshwater ponds and lakes is referred to as a pond watershed. Relatively few pond watersheds have been delineated across the Cape. Land area within pond watersheds is much larger than the water bodies themselves. In Barnstable, **19%** of the town's total land area is within a delineated pond watershed.



Land Use in Pond Buffer Area

Understanding the way that land is used around our freshwater ponds contributes to a better understanding of potential pond impacts, stressors, and viable strategies to protect or restore pond health. **3,386** acres (or **8%**) of the town's total land area is within 300 feet of a freshwater pond.



Documented Town Reports and Actions

4

Town Specific Freshwater Reports

13

Pond Specific Freshwater Reports

Local Pond Organizations

Independent groups, organizing around a single or multiple ponds, voluntarily conduct educational and advocacy efforts and collect water quality monitoring data, which is not always available or sufficient for regional analysis.

Red Lily Pond Project Association

Association for the Preservation of Long Pond

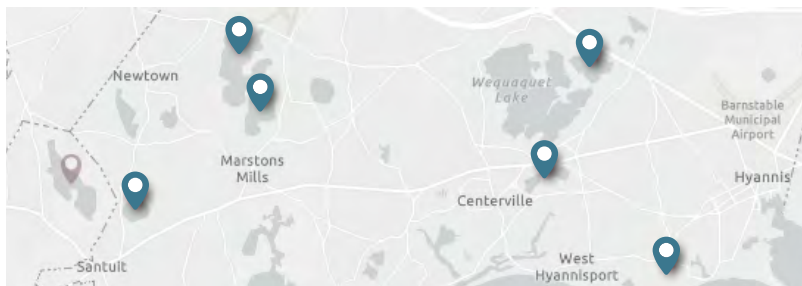
Barnstable Clean Water Coalition

Friends of Long Pond Marstons Mills

Garretts Pond Watchers

Indian Ponds Association

Wequaquet Lake Protective Association



Pond Strategies Implemented

Updates and additional projects will be added as information becomes available. Review project details at: ccom.link/pond-restoration-projects

- Lovells Pond, Alum Treatment
- Lovells Pond, Aeration
- Schoolhouse Pond, Circulators
- Shallow Pond, Herbicide Treatment
- Mystic Lake, Vegetation Harvesting
- Mystic Lake, Alum Treatment
- Mystic Lake, Herbicide Treatment
- Long Pond, Herbicide Treatment
- Hamblin Pond, Alum Treatment
- Wequaquet Lake, Vegetation Harvesting
- Middle Pond, Herbicide Treatment
- Shubael Pond, I/A Septic System Installation
- Three Bays Watershed, Hamblin Bogs Wetland Restoration